

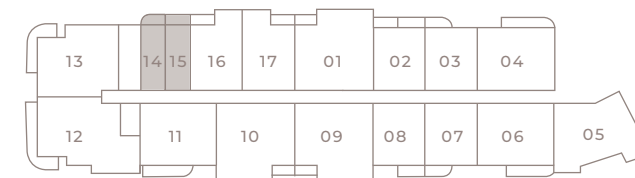
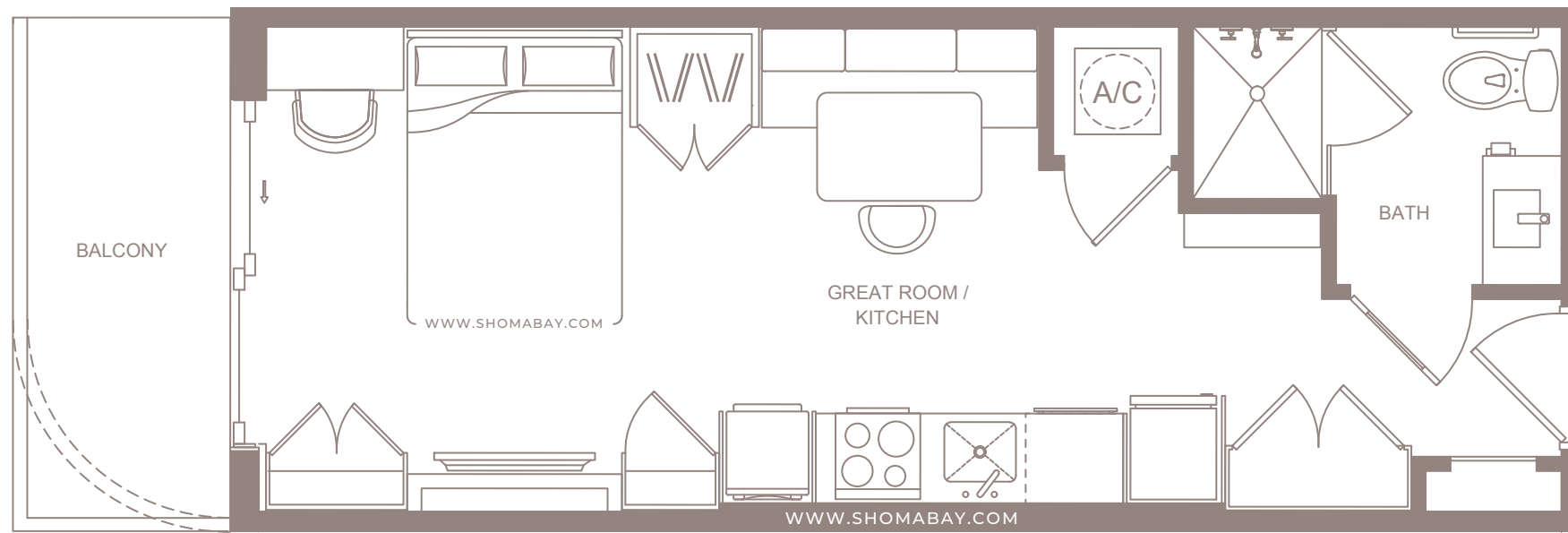
- STUDIO
- 1 BEDROOMS
- 2 BEDROOMS
- 3 BEDROOMS

Exclusive Sales & Marketing by **ISGWORLD®**

OVERALL LEVEL 8 - PLAN
 17 UNITS
 SCALE: 1/20" = 1'-0"

All plans, features and amenities depicted herein are based upon preliminary development plans and are subject to change without notice in the manner provided in the offering documents by the developer. No guarantees or representations whatsoever are made that any plans, features, amenities or facilities will be provided or, if provided, will be of the same type, size, location or nature as depicted or described herein. The sketches, renderings, graphic materials, plans, specifications, terms, conditions and statements contained are proposed only. We reserve the right to modify, revise or withdraw any or all of same in our sole discretion and without prior notice.





STUDIO

INTERIOR: 376 SQ.FT (34.9 m²)
EXTERIOR: 56 SQ.FT (5.2 m²)

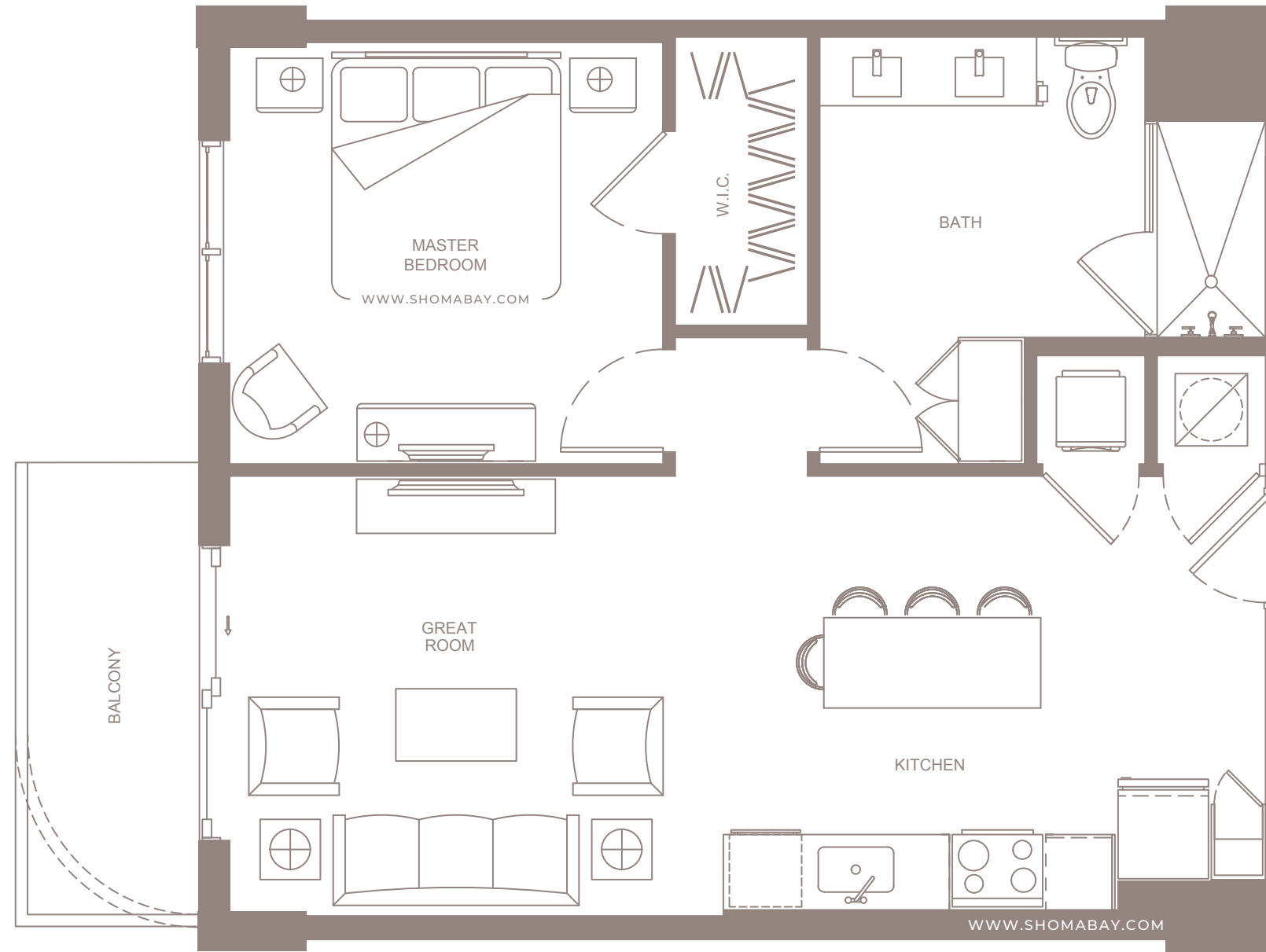


Any renderings and depictions are conceptual only and are for the convenience of reference. They should not be relied upon as representations, express or implied, of the final detail of the Units nor the views from any of the Units. ORAL REPRESENTATIONS CANNOT BE RELIED UPON AS CORRECTLY STATING REPRESENTATIONS OF THE DEVELOPER. FOR CORRECT REPRESENTATIONS, MAKE REFERENCE TO THIS BROCHURE AND TO THE DOCUMENTS REQUIRED BY 718.503, FLORIDA STATUTES, TO BE FURNISHED BY A DEVELOPER TO A BUYER OR LESSEE.



SHOMA

ISGWORLD®



UNIT A1 (1BD / 1BTH)

INTERIOR: 750 SQ.FT (69.7 m²)

EXTERIOR: 60 SQ.FT (5.6 m²)

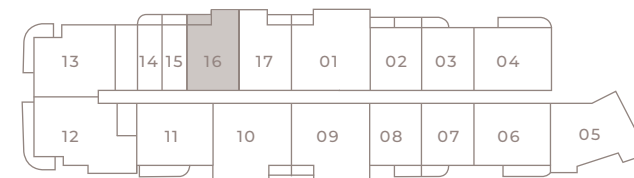
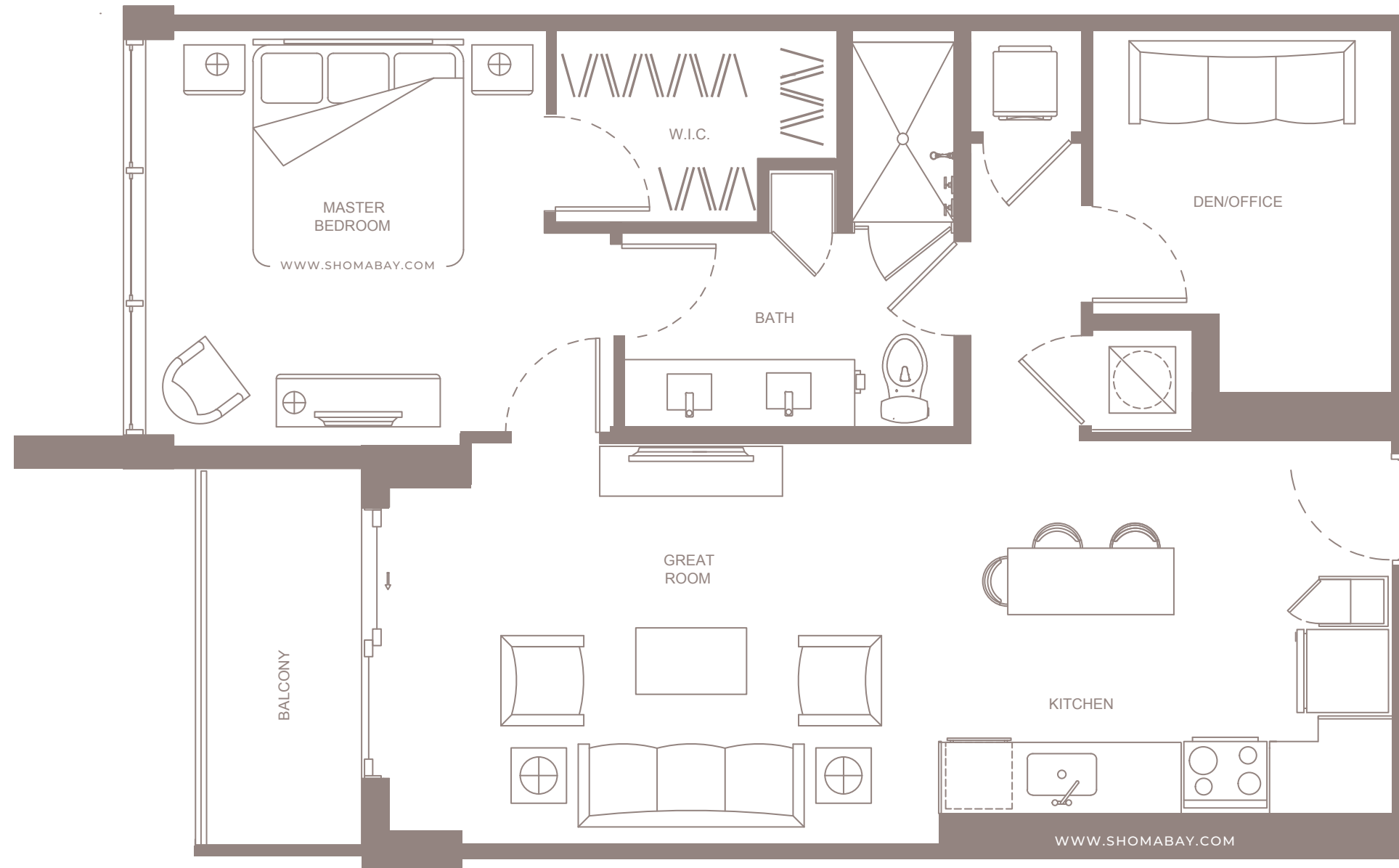


Any renderings and depictions are conceptual only and are for the convenience of reference. They should not be relied upon as representations, express or implied, of the final detail of the Units nor the views from any of the Units. ORAL REPRESENTATIONS CANNOT BE RELIED UPON AS CORRECTLY STATING REPRESENTATIONS OF THE DEVELOPER. FOR CORRECT REPRESENTATIONS, MAKE REFERENCE TO THIS BROCHURE AND TO THE DOCUMENTS REQUIRED BY 718.503, FLORIDA STATUTES, TO BE FURNISHED BY A DEVELOPER TO A BUYER OR LESSEE.



SHOMA

ISGWORLD®



UNIT A2.1 (1BD / DEN / 1BTH)

INTERIOR: 871 SQ.FT (80.9 m²)

EXTERIOR: 57 SQ.FT (5.3 m²)

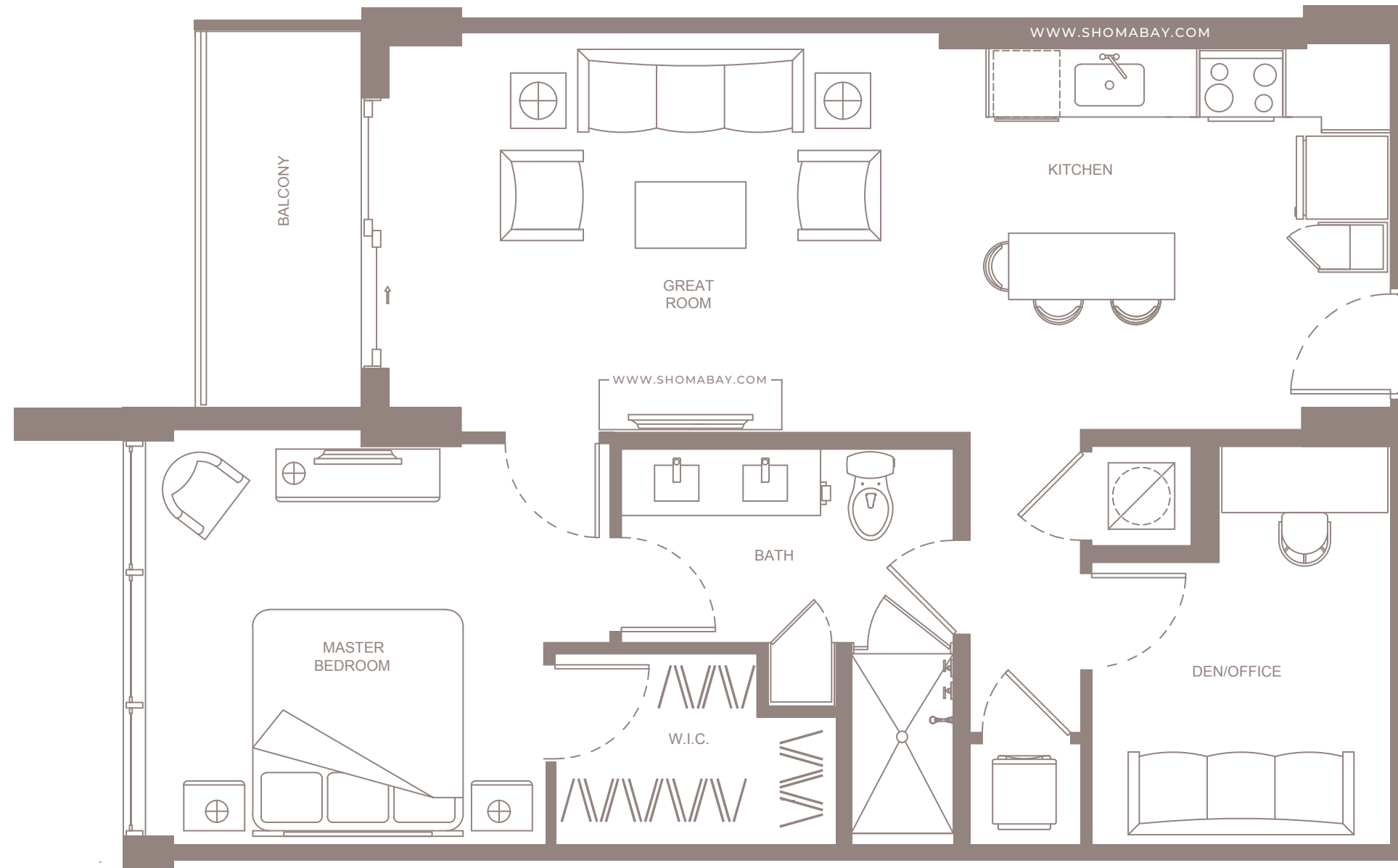


Any renderings and depictions are conceptual only and are for the convenience of reference. They should not be relied upon as representations, express or implied, of the final detail of the Units nor the views from any of the Units. ORAL REPRESENTATIONS CANNOT BE RELIED UPON AS CORRECTLY STATING REPRESENTATIONS OF THE DEVELOPER. FOR CORRECT REPRESENTATIONS, MAKE REFERENCE TO THIS BROCHURE AND TO THE DOCUMENTS REQUIRED BY 718.503, FLORIDA STATUTES, TO BE FURNISHED BY A DEVELOPER TO A BUYER OR LESSEE.



SHOMA

ISGWORLD®



UNIT A2 (1BD / DEN / 1BTH)

INTERIOR: 881 SQ.FT (81.8 m²)

EXTERIOR: 57 SQ.FT (5.3 m²)

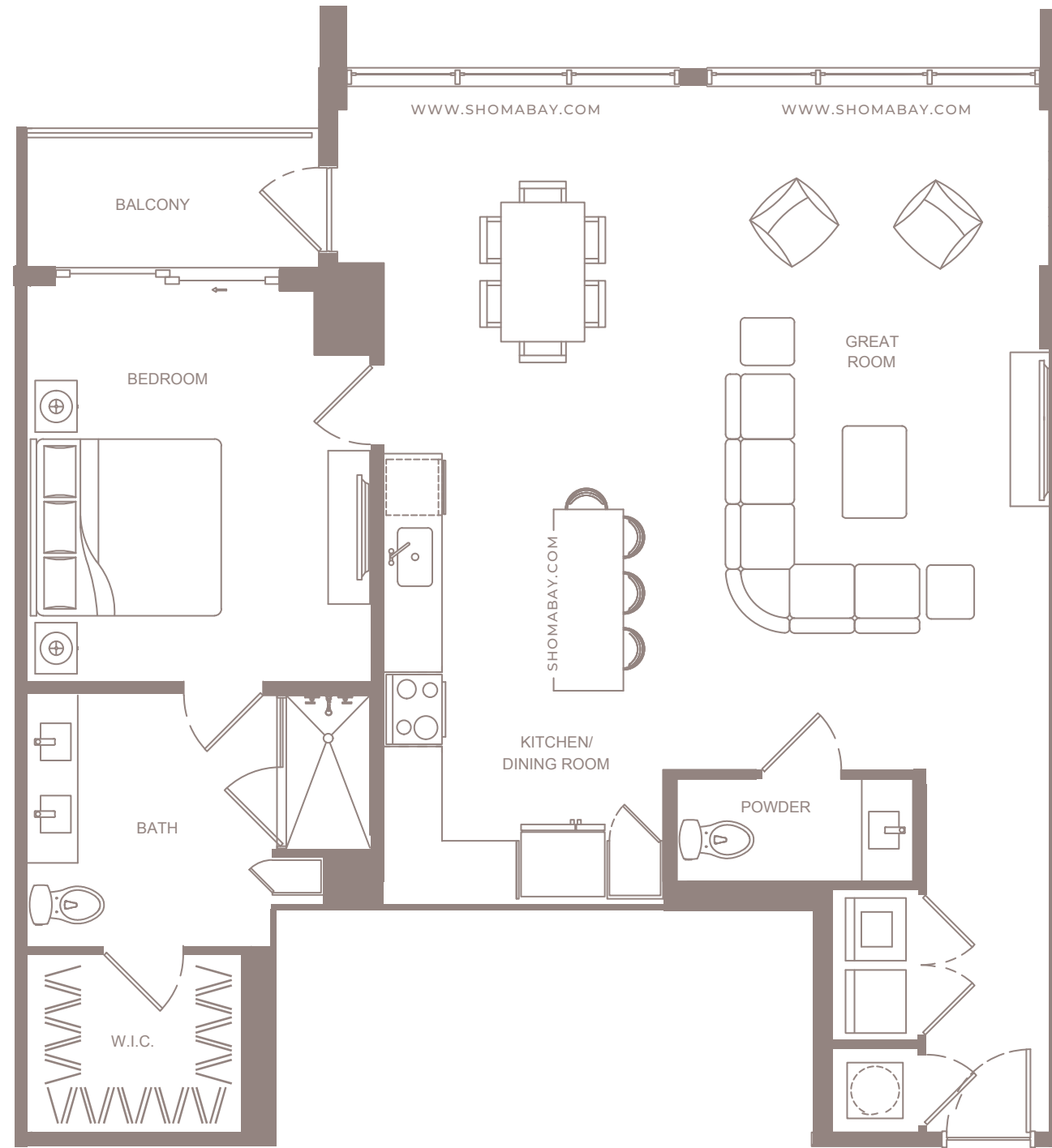


Any renderings and depictions are conceptual only and are for the convenience of reference. They should not be relied upon as representations, express or implied, of the final detail of the Units nor the views from any of the Units. ORAL REPRESENTATIONS CANNOT BE RELIED UPON AS CORRECTLY STATING REPRESENTATIONS OF THE DEVELOPER. FOR CORRECT REPRESENTATIONS, MAKE REFERENCE TO THIS BROCHURE AND TO THE DOCUMENTS REQUIRED BY 718.503, FLORIDA STATUTES, TO BE FURNISHED BY A DEVELOPER TO A BUYER OR LESSEE.



SHOMA

ISGWORLD®



UNIT A3 (1BD / 1.5BTH)
 INTERIOR: 1,187 SQ.FT (110.3 m²)
 EXTERIOR: 53 SQ.FT (4.9 m²)

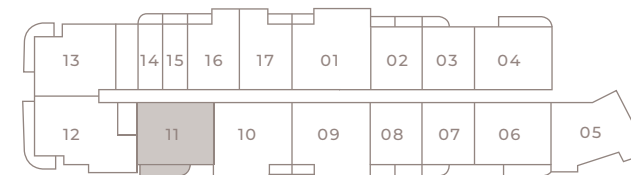
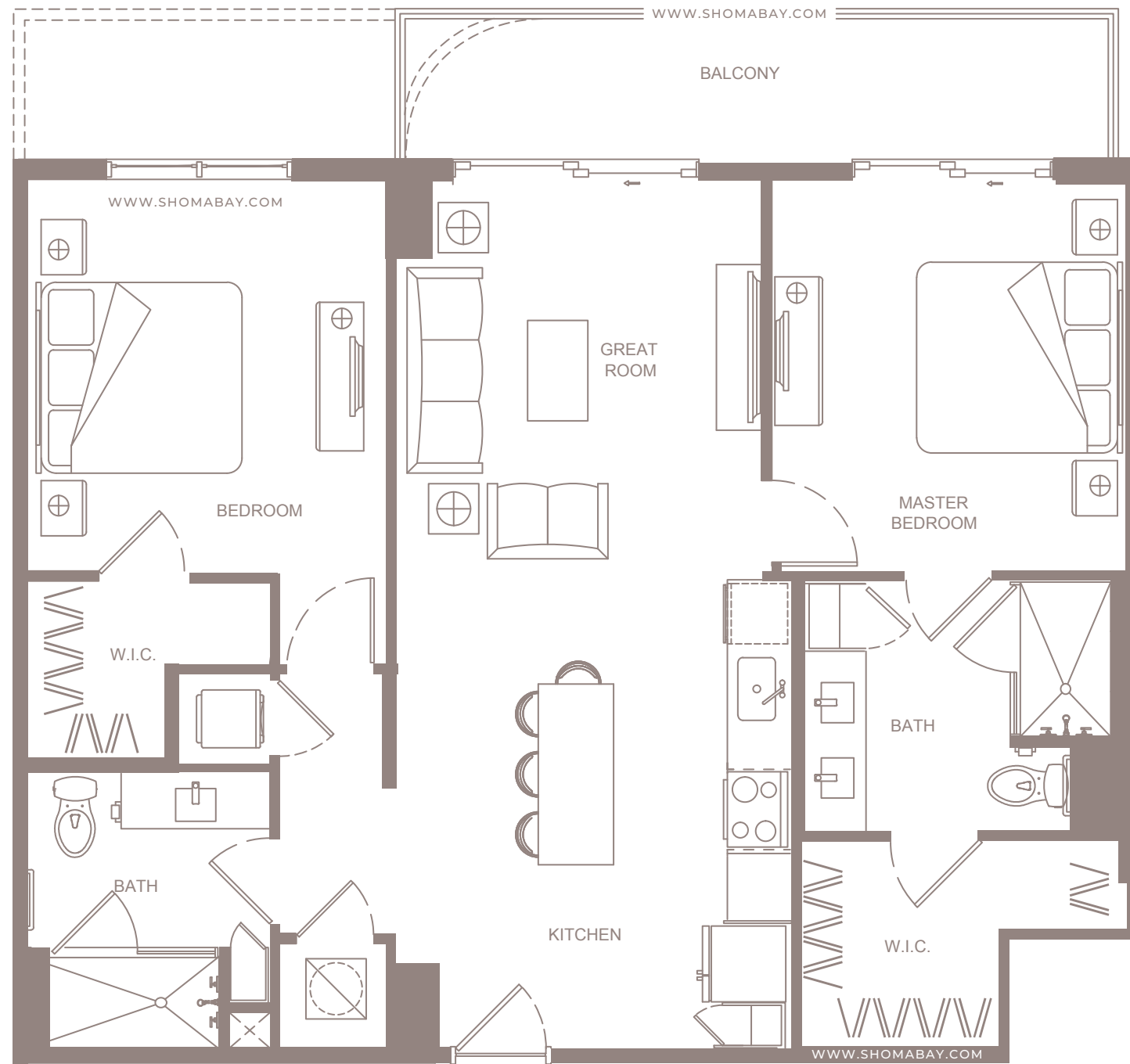


Any renderings and depictions are conceptual only and are for the convenience of reference. They should not be relied upon as representations, express or implied, of the final detail of the Units nor the views from any of the Units. ORAL REPRESENTATIONS CANNOT BE RELIED UPON AS CORRECTLY STATING REPRESENTATIONS OF THE DEVELOPER. FOR CORRECT REPRESENTATIONS, MAKE REFERENCE TO THIS BROCHURE AND TO THE DOCUMENTS REQUIRED BY 718.503, FLORIDA STATUTES, TO BE FURNISHED BY A DEVELOPER TO A BUYER OR LESSEE.



SHOMA

ISGWORLD®



UNIT B1 (2BD / 2BTH)

INTERIOR: 1,085 SQ.FT (100.8 m²)

EXTERIOR: 115 SQ.FT (10.7 m²)

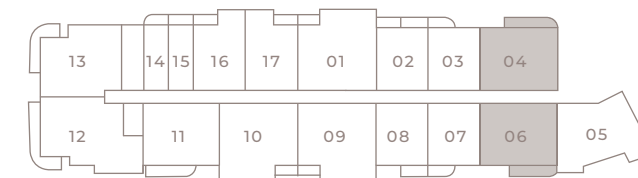
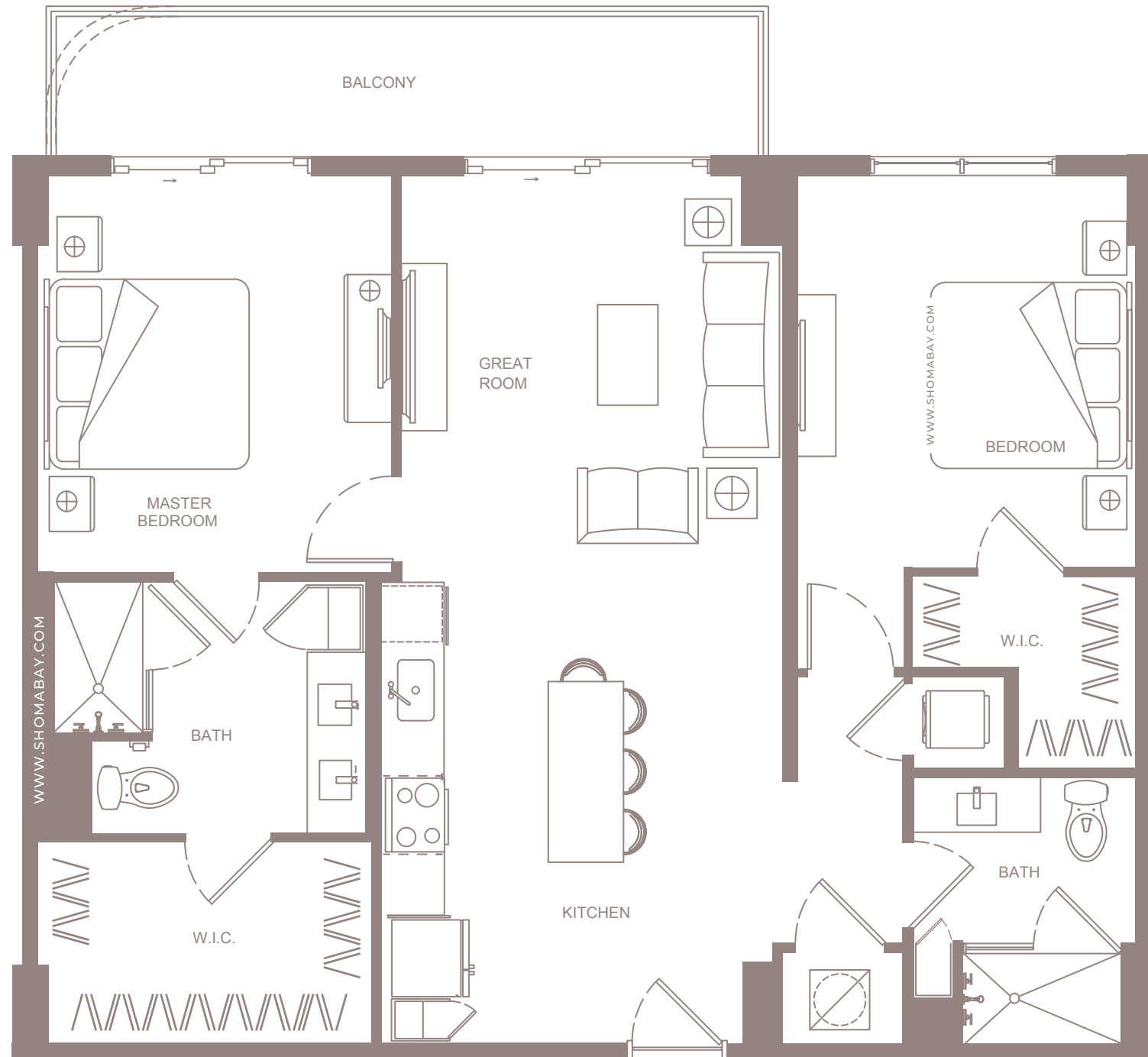


Any renderings and depictions are conceptual only and are for the convenience of reference. They should not be relied upon as representations, express or implied, of the final detail of the Units nor the views from any of the Units. ORAL REPRESENTATIONS CANNOT BE RELIED UPON AS CORRECTLY STATING REPRESENTATIONS OF THE DEVELOPER. FOR CORRECT REPRESENTATIONS, MAKE REFERENCE TO THIS BROCHURE AND TO THE DOCUMENTS REQUIRED BY 718.503, FLORIDA STATUTES, TO BE FURNISHED BY A DEVELOPER TO A BUYER OR LESSEE.



SHOMA

ISGWORLD®



UNIT B1A (2BD / 2BTH)

INTERIOR: 1,093 SQ.FT (101.5 m²)

EXTERIOR: 123 SQ.FT (11.4 m²)

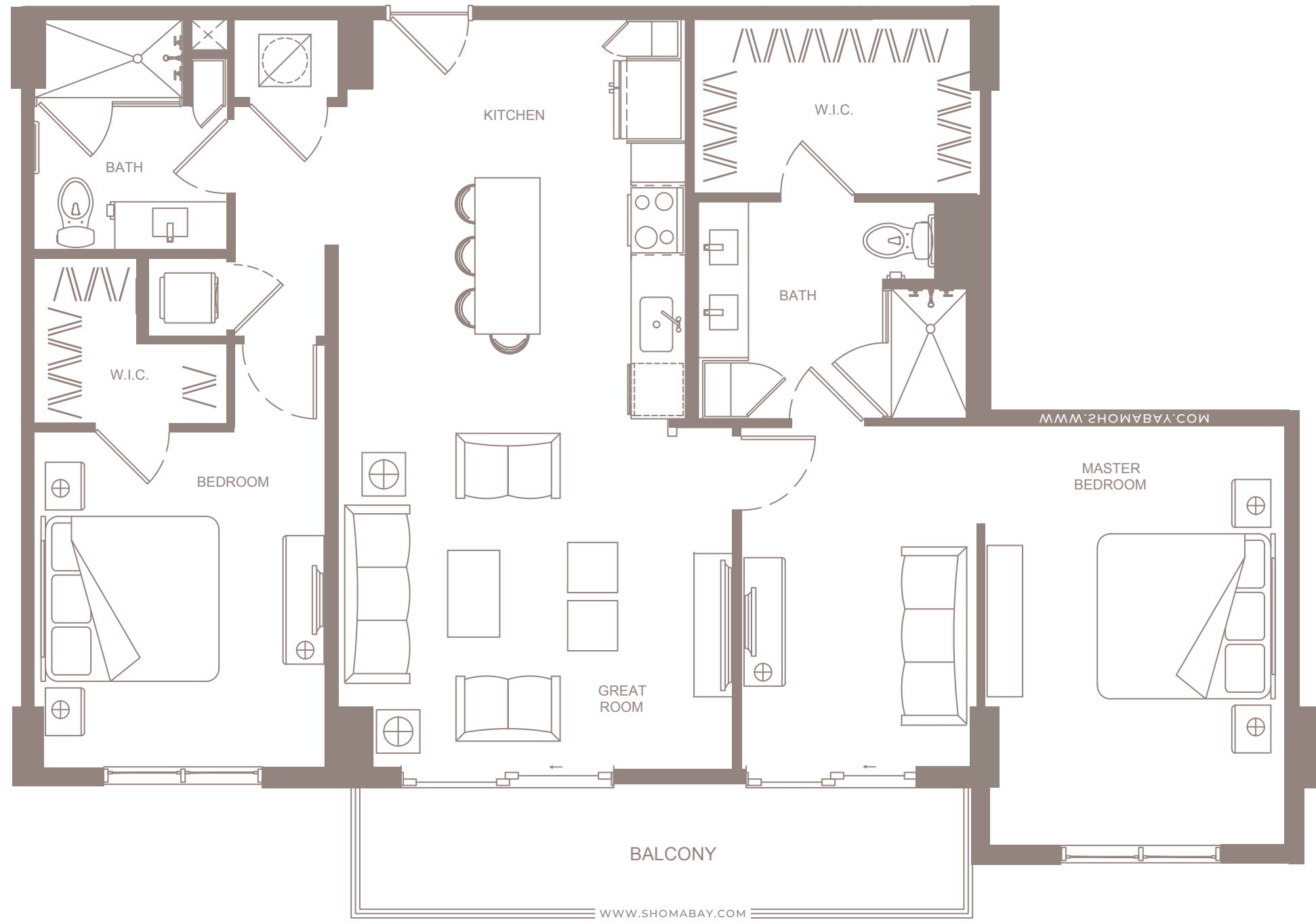


Any renderings and depictions are conceptual only and are for the convenience of reference. They should not be relied upon as representations, express or implied, of the final detail of the Units nor the views from any of the Units. ORAL REPRESENTATIONS CANNOT BE RELIED UPON AS CORRECTLY STATING REPRESENTATIONS OF THE DEVELOPER. FOR CORRECT REPRESENTATIONS, MAKE REFERENCE TO THIS BROCHURE AND TO THE DOCUMENTS REQUIRED BY 718.503, FLORIDA STATUTES, TO BE FURNISHED BY A DEVELOPER TO A BUYER OR LESSEE.



SHOMA

ISGWORLD®



UNIT B1A.2 (2BD / 2BTH)
 INTERIOR: 1304 SQ.FT (121.1 m²)
 EXTERIOR: 123 SQ.FT (11.4 m²)

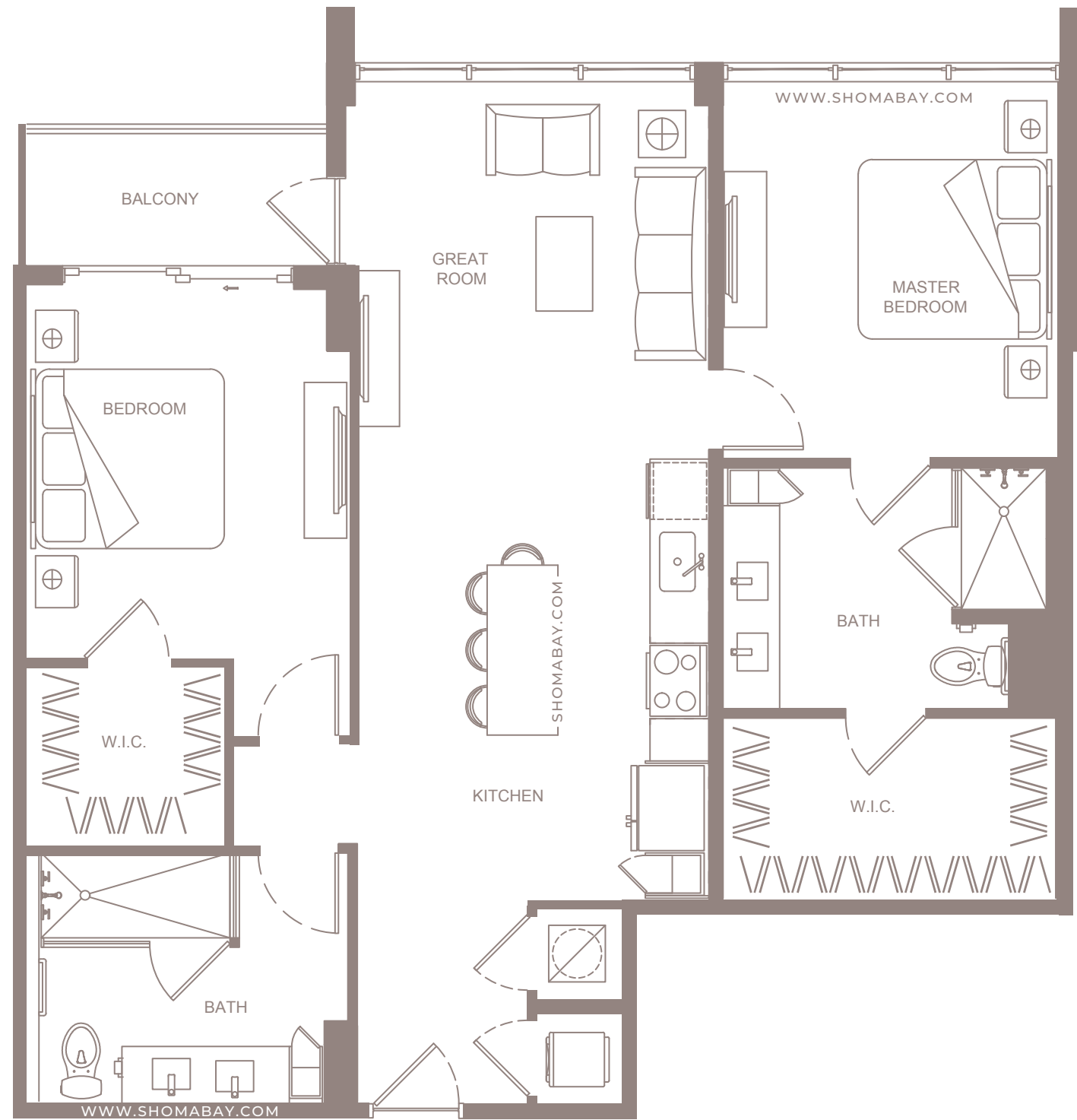


Any renderings and depictions are conceptual only and are for the convenience of reference. They should not be relied upon as representations, express or implied, of the final detail of the Units nor the views from any of the Units. ORAL REPRESENTATIONS CANNOT BE RELIED UPON AS CORRECTLY STATING REPRESENTATIONS OF THE DEVELOPER. FOR CORRECT REPRESENTATIONS, MAKE REFERENCE TO THIS BROCHURE AND TO THE DOCUMENTS REQUIRED BY 718.503, FLORIDA STATUTES, TO BE FURNISHED BY A DEVELOPER TO A BUYER OR LESSEE.



SHOMA

ISGWORLD®



UNIT B2 (2BD / 2BTH)

INTERIOR: 1,183 SQ.FT (109.9 m²)

EXTERIOR: 54 SQ.FT (5 m²)

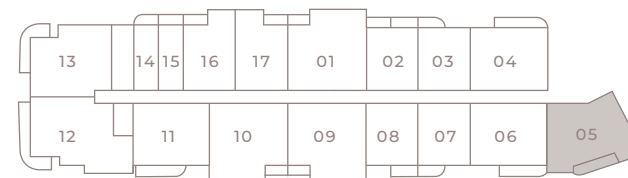
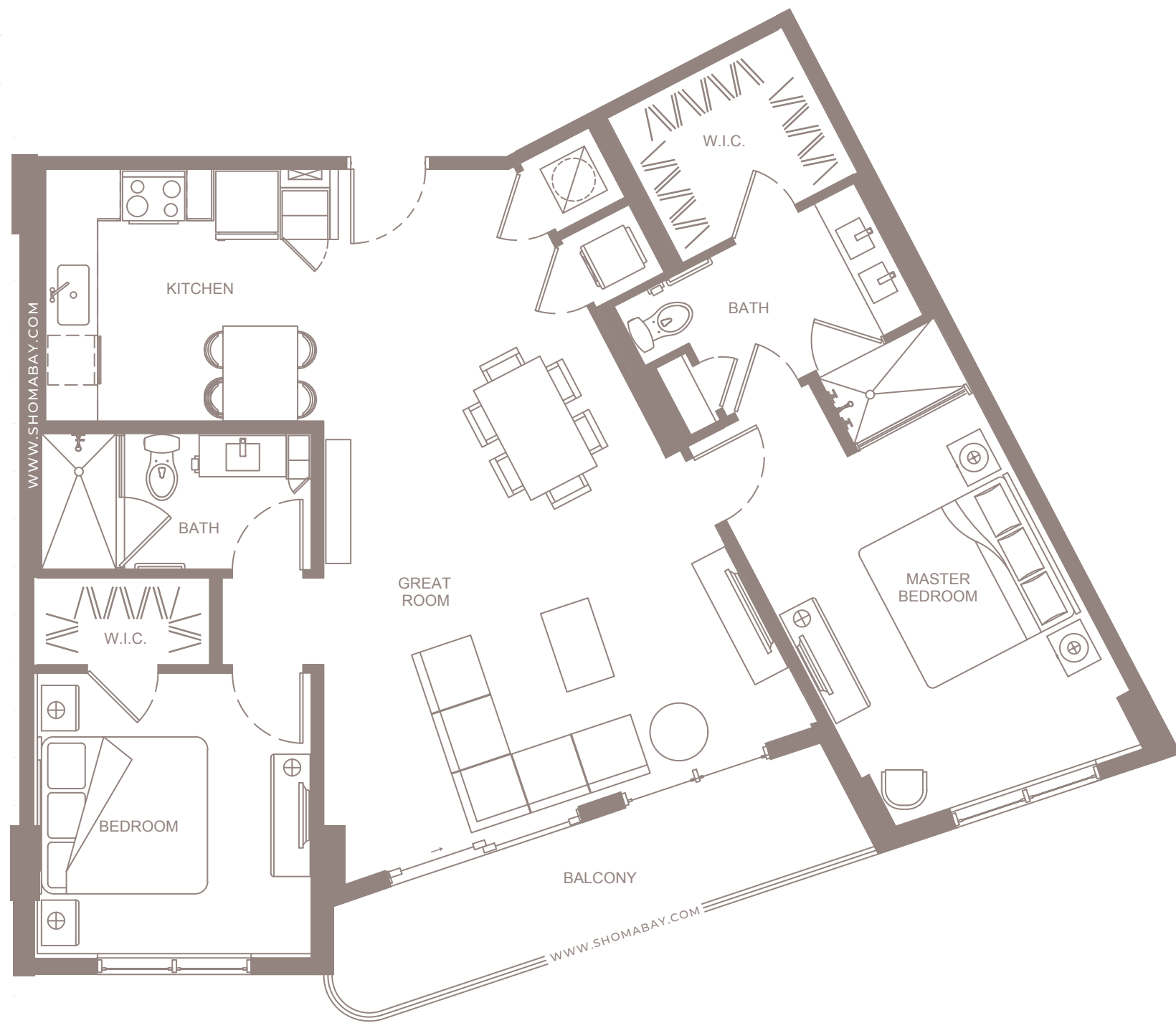


Any renderings and depictions are conceptual only and are for the convenience of reference. They should not be relied upon as representations, express or implied, of the final detail of the Units nor the views from any of the Units. ORAL REPRESENTATIONS CANNOT BE RELIED UPON AS CORRECTLY STATING REPRESENTATIONS OF THE DEVELOPER. FOR CORRECT REPRESENTATIONS, MAKE REFERENCE TO THIS BROCHURE AND TO THE DOCUMENTS REQUIRED BY 718.503, FLORIDA STATUTES, TO BE FURNISHED BY A DEVELOPER TO A BUYER OR LESSEE.



SHOMA

ISGWORLD®



UNIT B3 (2BD / 2BTH)

INTERIOR: 1203 SQ.FT (112.3 m²)

EXTERIOR: 109 SQ.FT (10.1 m²)

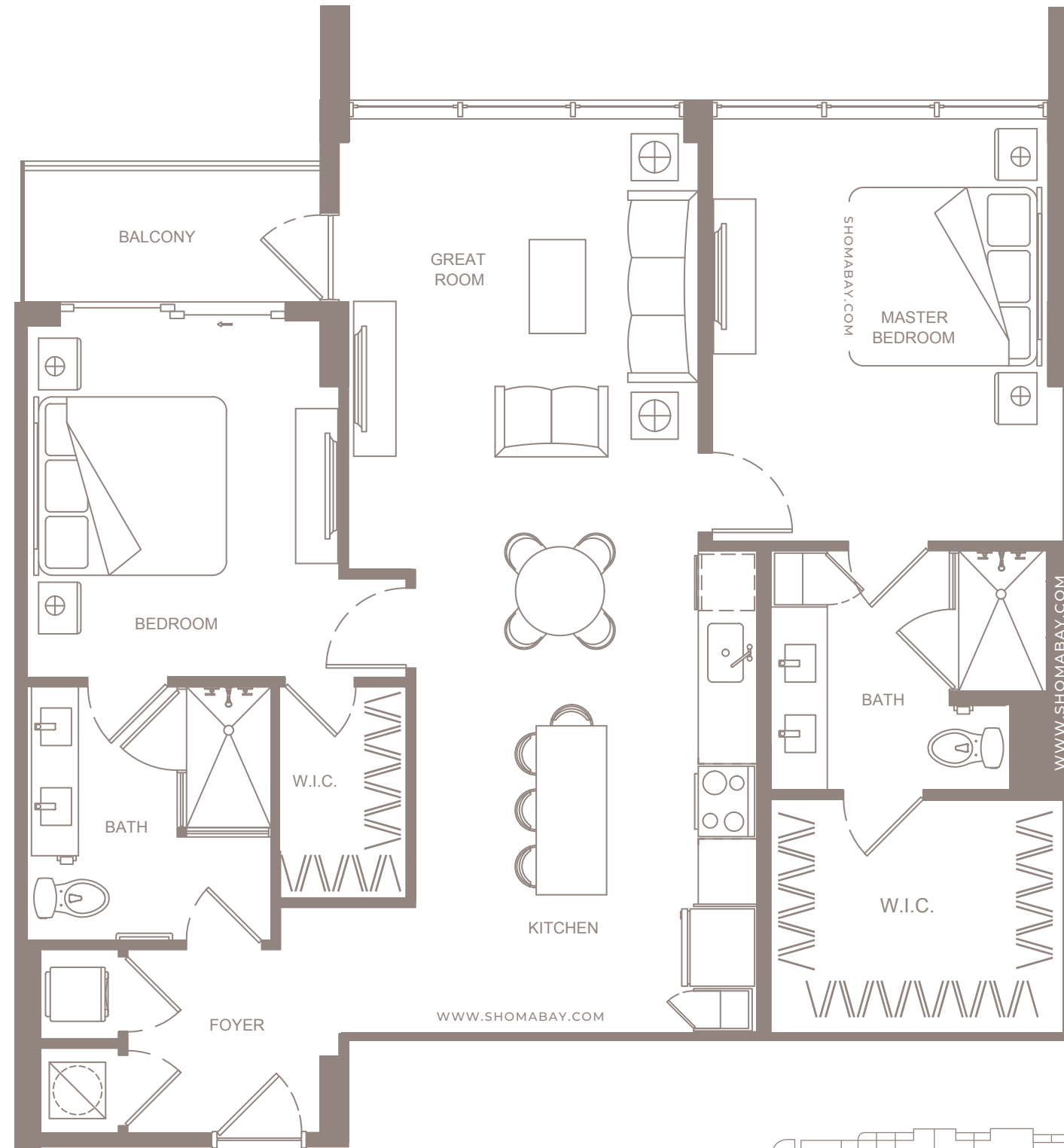


Any renderings and depictions are conceptual only and are for the convenience of reference. They should not be relied upon as representations, express or implied, of the final detail of the Units nor the views from any of the Units. ORAL REPRESENTATIONS CANNOT BE RELIED UPON AS CORRECTLY STATING REPRESENTATIONS OF THE DEVELOPER. FOR CORRECT REPRESENTATIONS, MAKE REFERENCE TO THIS BROCHURE AND TO THE DOCUMENTS REQUIRED BY 718.503, FLORIDA STATUTES, TO BE FURNISHED BY A DEVELOPER TO A BUYER OR LESSEE.



SHOMA

ISGWORLD®



UNIT B4 (2BD / 2BTH)

INTERIOR: 1,214 SQ.FT (112.8 m²)

EXTERIOR: 54 SQ.FT (5 m²)

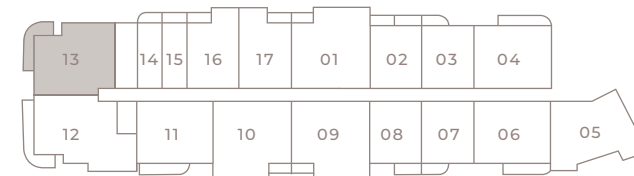
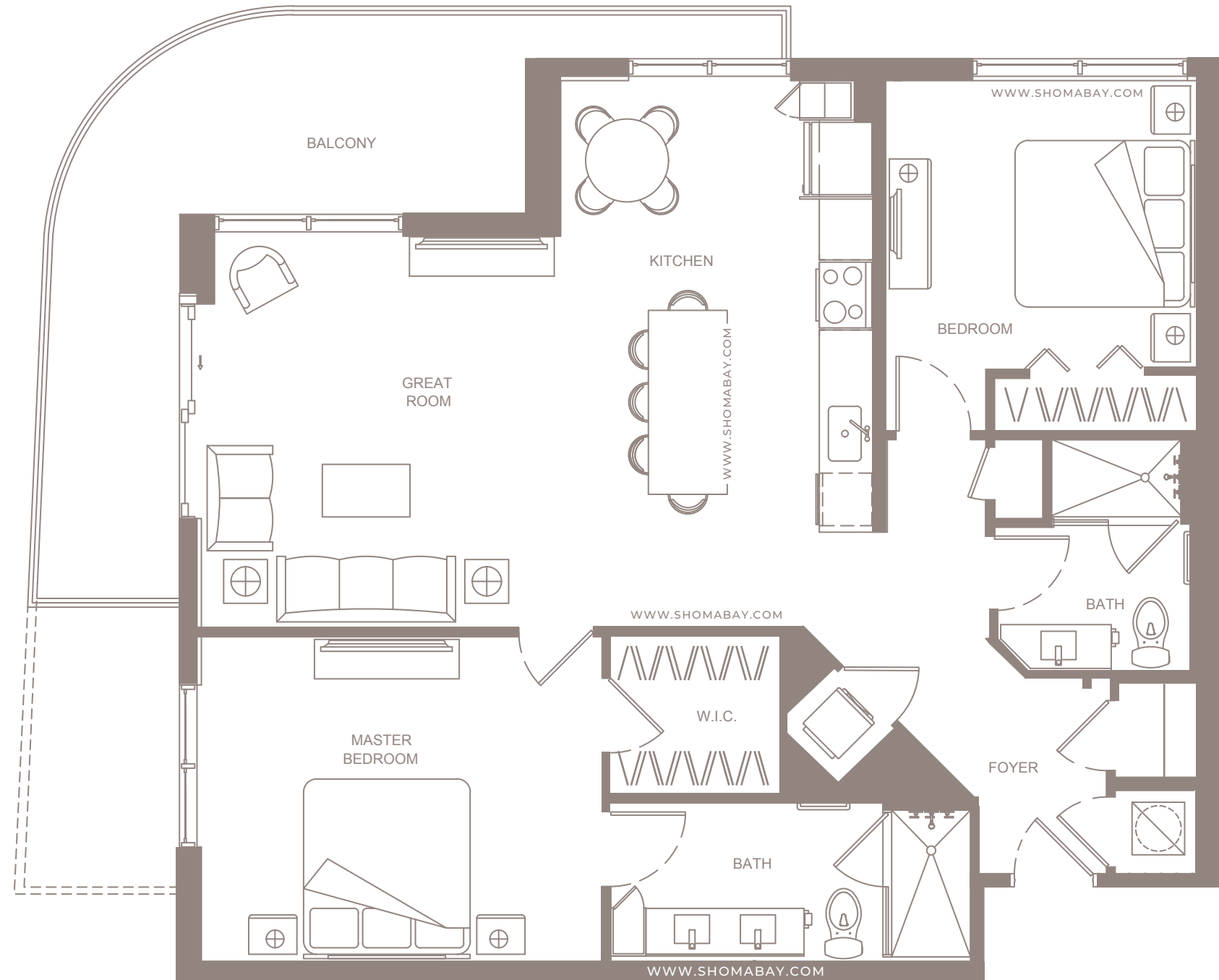
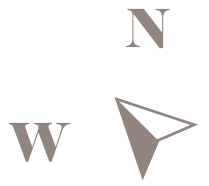


Any renderings and depictions are conceptual only and are for the convenience of reference. They should not be relied upon as representations, express or implied, of the final detail of the Units nor the views from any of the Units. ORAL REPRESENTATIONS CANNOT BE RELIED UPON AS CORRECTLY STATING REPRESENTATIONS OF THE DEVELOPER. FOR CORRECT REPRESENTATIONS, MAKE REFERENCE TO THIS BROCHURE AND TO THE DOCUMENTS REQUIRED BY 718.503, FLORIDA STATUTES, TO BE FURNISHED BY A DEVELOPER TO A BUYER OR LESSEE.



SHOMA

ISGWORLD®



UNIT B5 (2BD / 2BTH)

INTERIOR: 1,253 SQ.FT (116.4 m²)

EXTERIOR: 236 SQ.FT (21.9 m²)

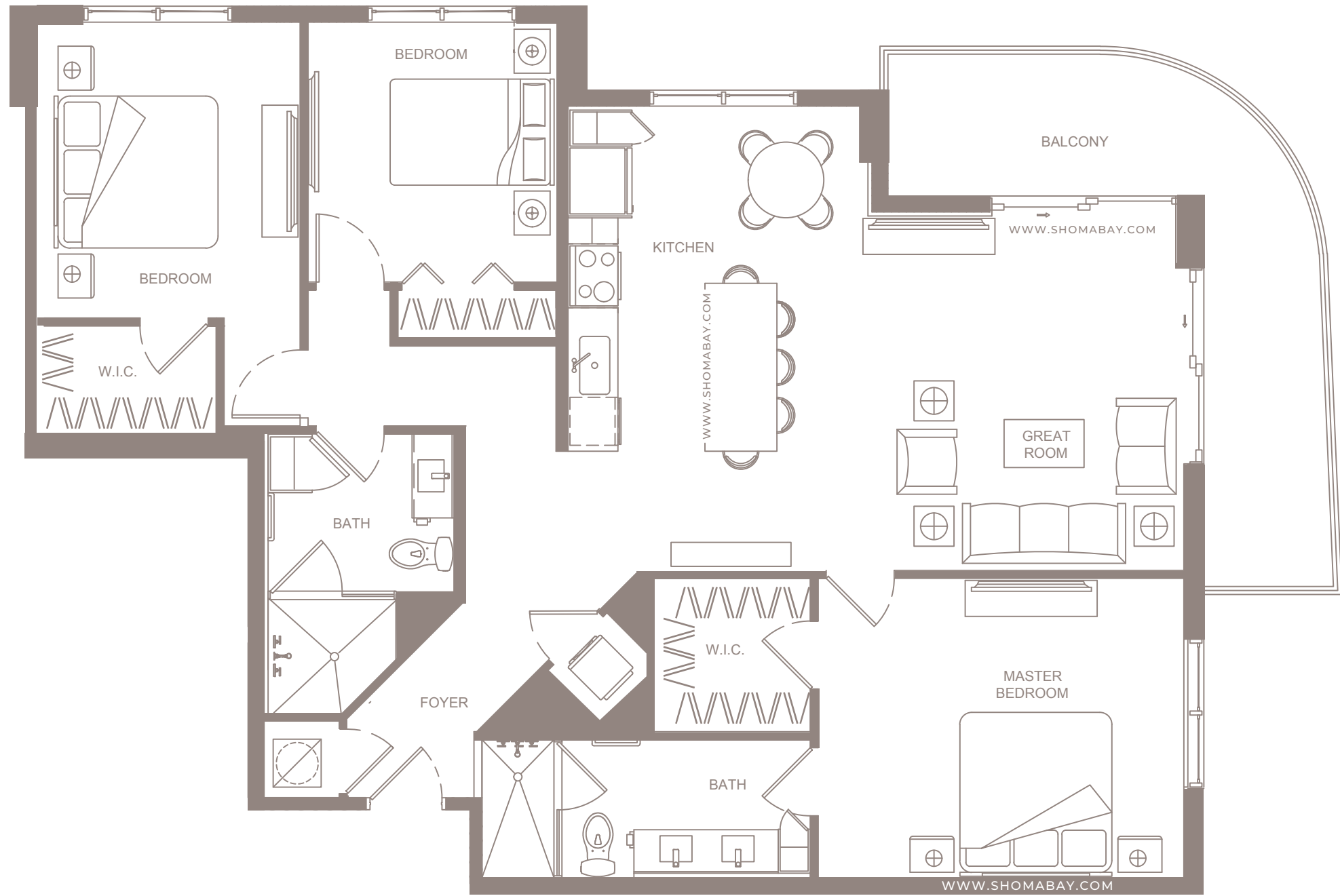
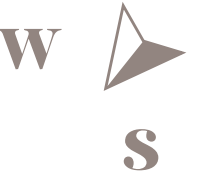


Any renderings and depictions are conceptual only and are for the convenience of reference. They should not be relied upon as representations, express or implied, of the final detail of the Units nor the views from any of the Units. ORAL REPRESENTATIONS CANNOT BE RELIED UPON AS CORRECTLY STATING REPRESENTATIONS OF THE DEVELOPER. FOR CORRECT REPRESENTATIONS, MAKE REFERENCE TO THIS BROCHURE AND TO THE DOCUMENTS REQUIRED BY 718.503, FLORIDA STATUTES, TO BE FURNISHED BY A DEVELOPER TO A BUYER OR LESSEE.



SHOMA

ISGWORLD®



UNIT C1 (3BD / 2BTH)

INTERIOR: 1,443 SQ.FT (134 m²)

EXTERIOR: 205 SQ.FT (19 m²)

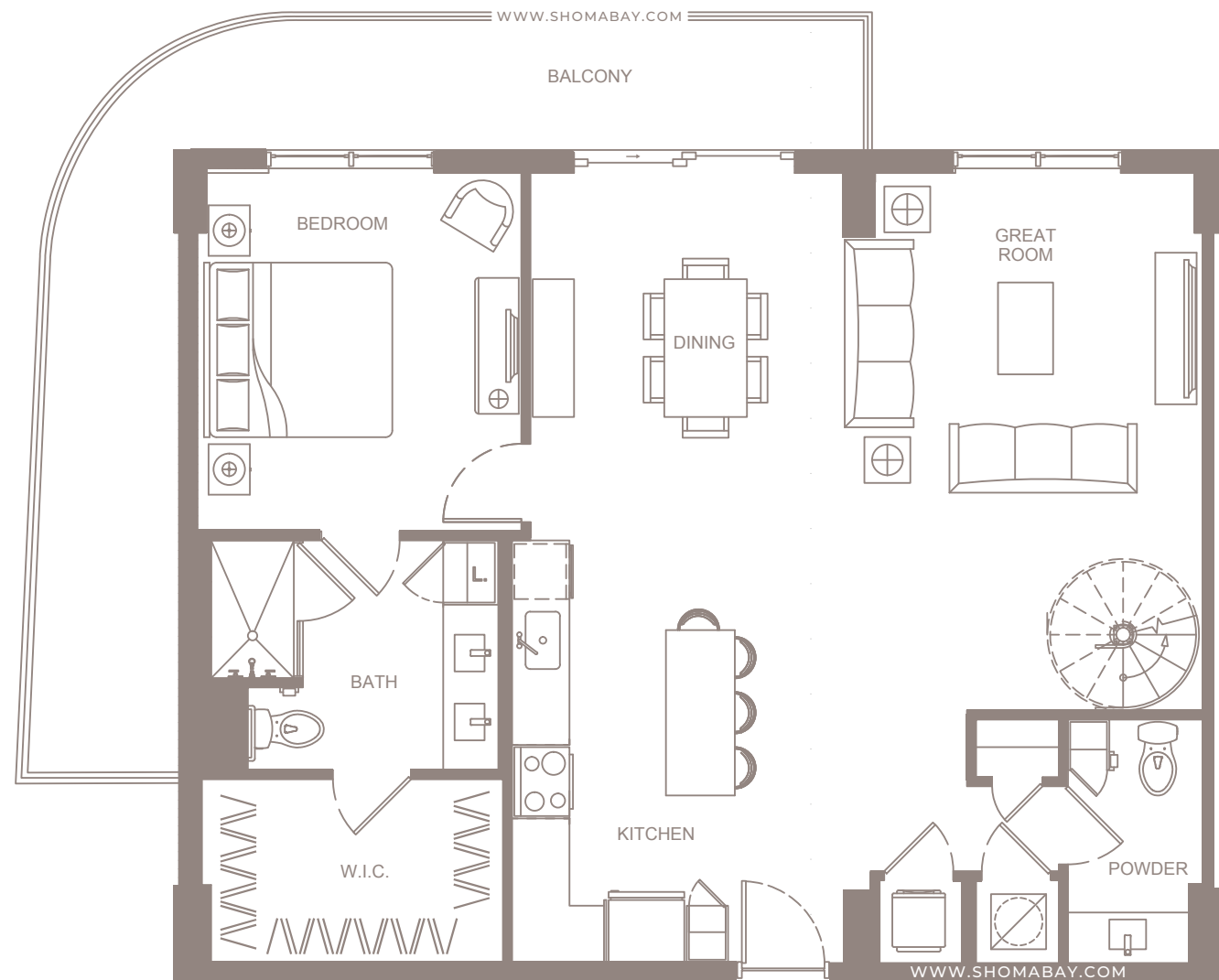


Any renderings and depictions are conceptual only and are for the convenience of reference. They should not be relied upon as representations, express or implied, of the final detail of the Units nor the views from any of the Units. ORAL REPRESENTATIONS CANNOT BE RELIED UPON AS CORRECTLY STATING REPRESENTATIONS OF THE DEVELOPER. FOR CORRECT REPRESENTATIONS, MAKE REFERENCE TO THIS BROCHURE AND TO THE DOCUMENTS REQUIRED BY 718.503, FLORIDA STATUTES, TO BE FURNISHED BY A DEVELOPER TO A BUYER OR LESSEE.

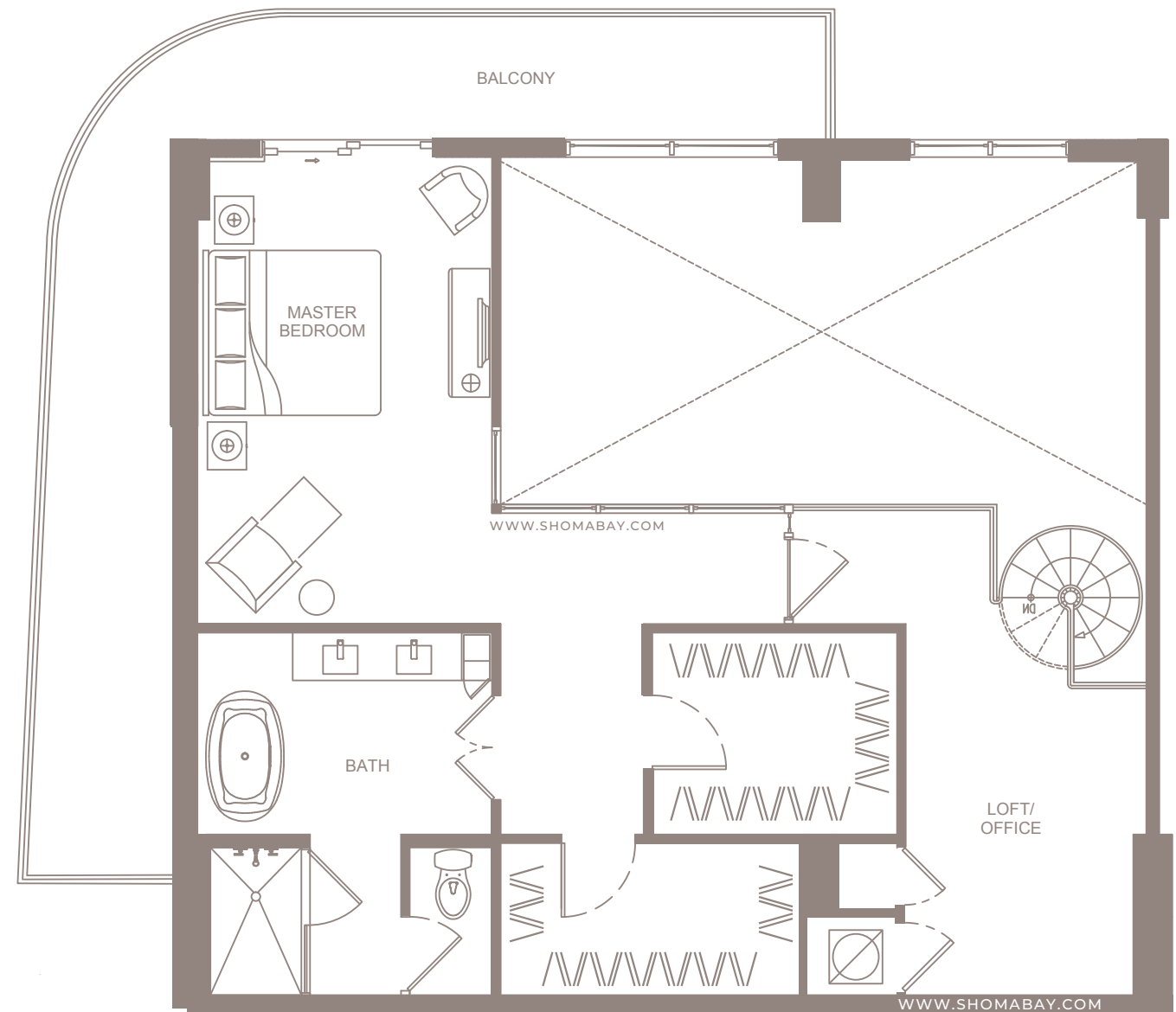


SHOMA

ISGWORLD®



LEVEL 1



LEVEL 2



LEVEL 1



LEVEL 2

UNIT P1 - PENTHOUSE (2BD / OFFICE / 2.5BTH)

INTERIOR: 1,979 SQ.FT (183.9 m²)

EXTERIOR: 535 SQ.FT (49.7m²)

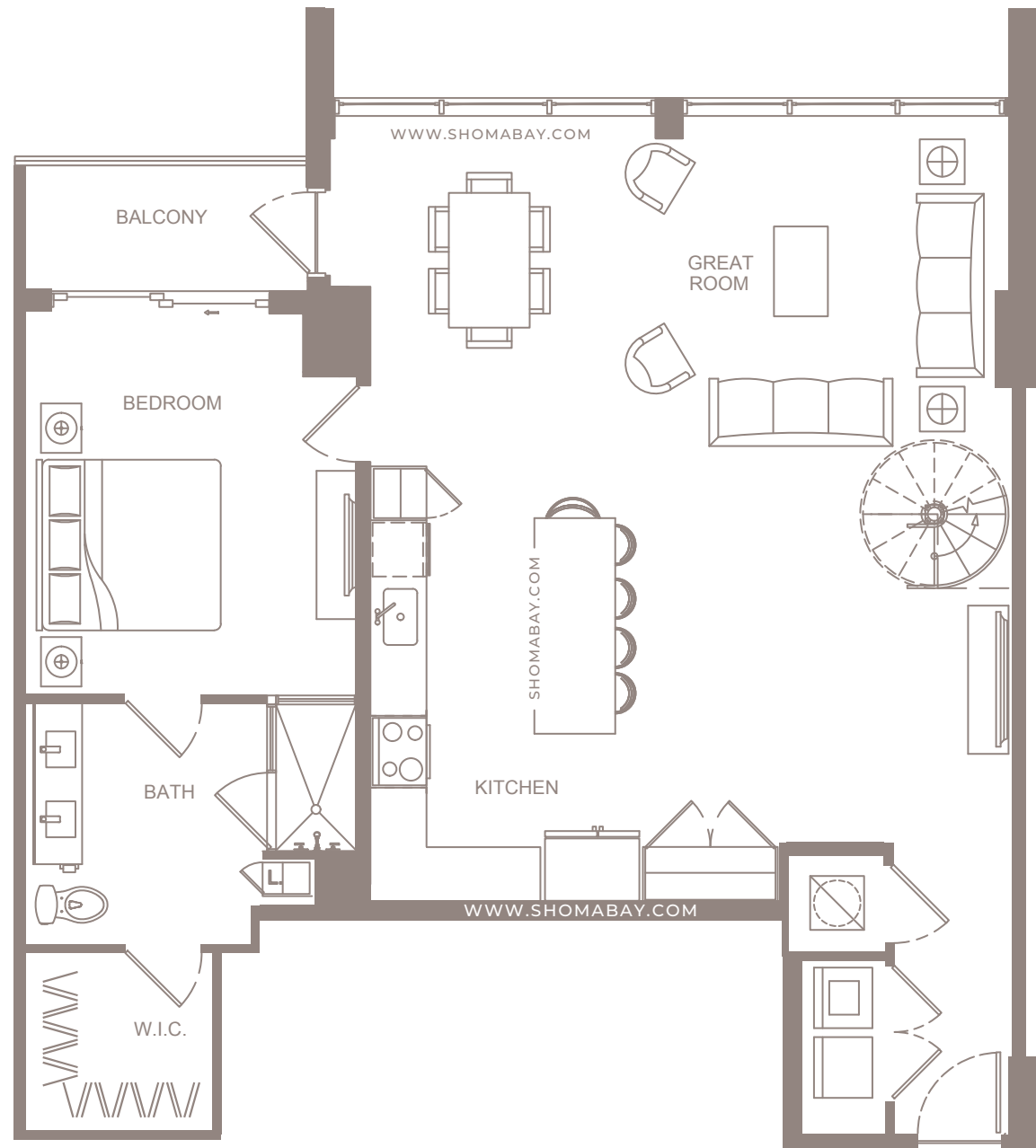


Any renderings and depictions are conceptual only and are for the convenience of reference. They should not be relied upon as representations, express or implied, of the final detail of the Units nor the views from any of the Units. ORAL REPRESENTATIONS CANNOT BE RELIED UPON AS CORRECTLY STATING REPRESENTATIONS OF THE DEVELOPER. FOR CORRECT REPRESENTATIONS, MAKE REFERENCE TO THIS BROCHURE AND TO THE DOCUMENTS REQUIRED BY 718.503, FLORIDA STATUTES, TO BE FURNISHED BY A DEVELOPER TO A BUYER OR LESSEE.

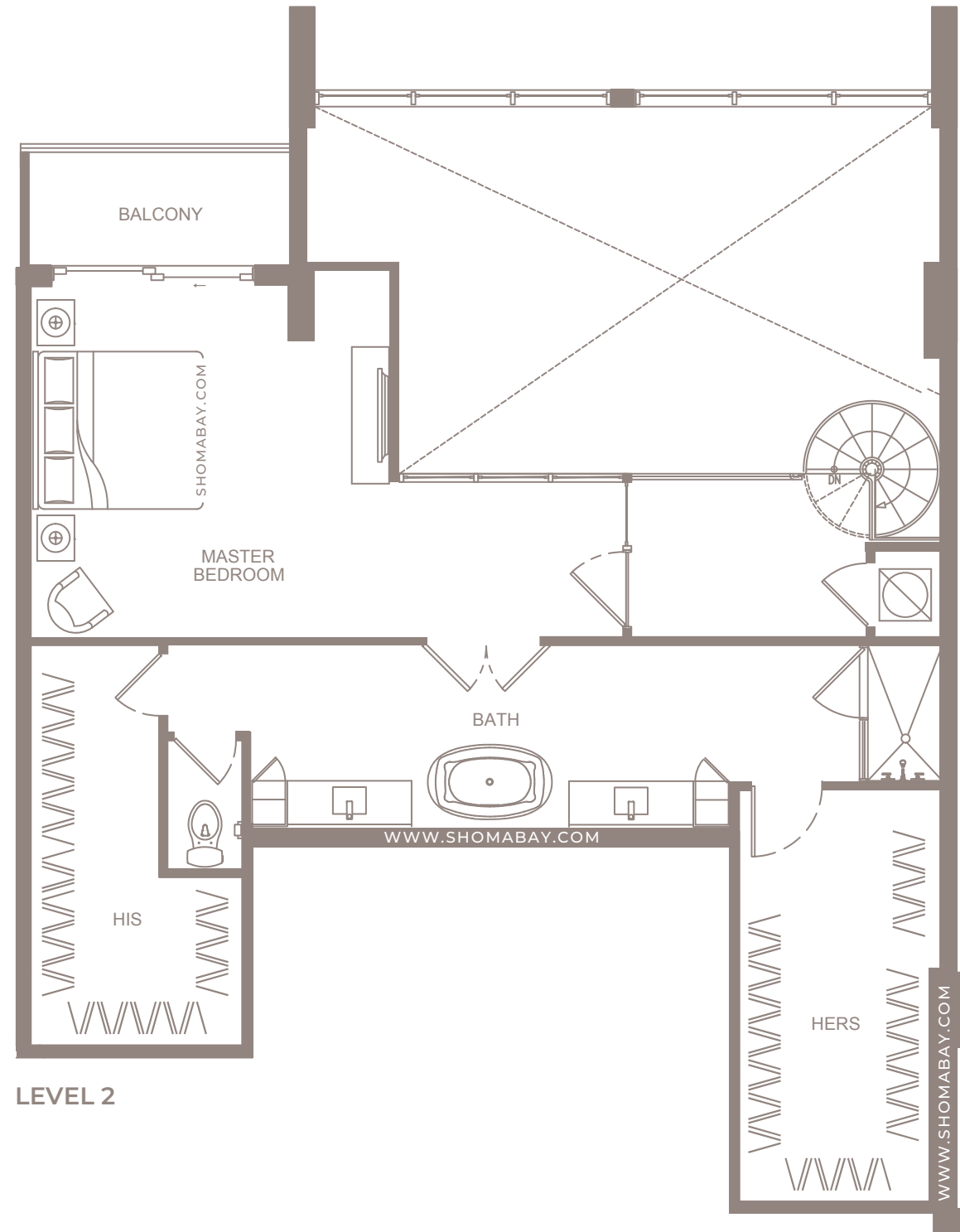


SHOMA

ISGWORLD®



LEVEL 1



LEVEL 2



LEVEL 1



LEVEL 2

UNIT P2 - PENTHOUSE (2BD / 2BTH)

INTERIOR: 2,063 SQ.FT (191.6 m²)

EXTERIOR: 106 SQ.FT (9.8 m²)

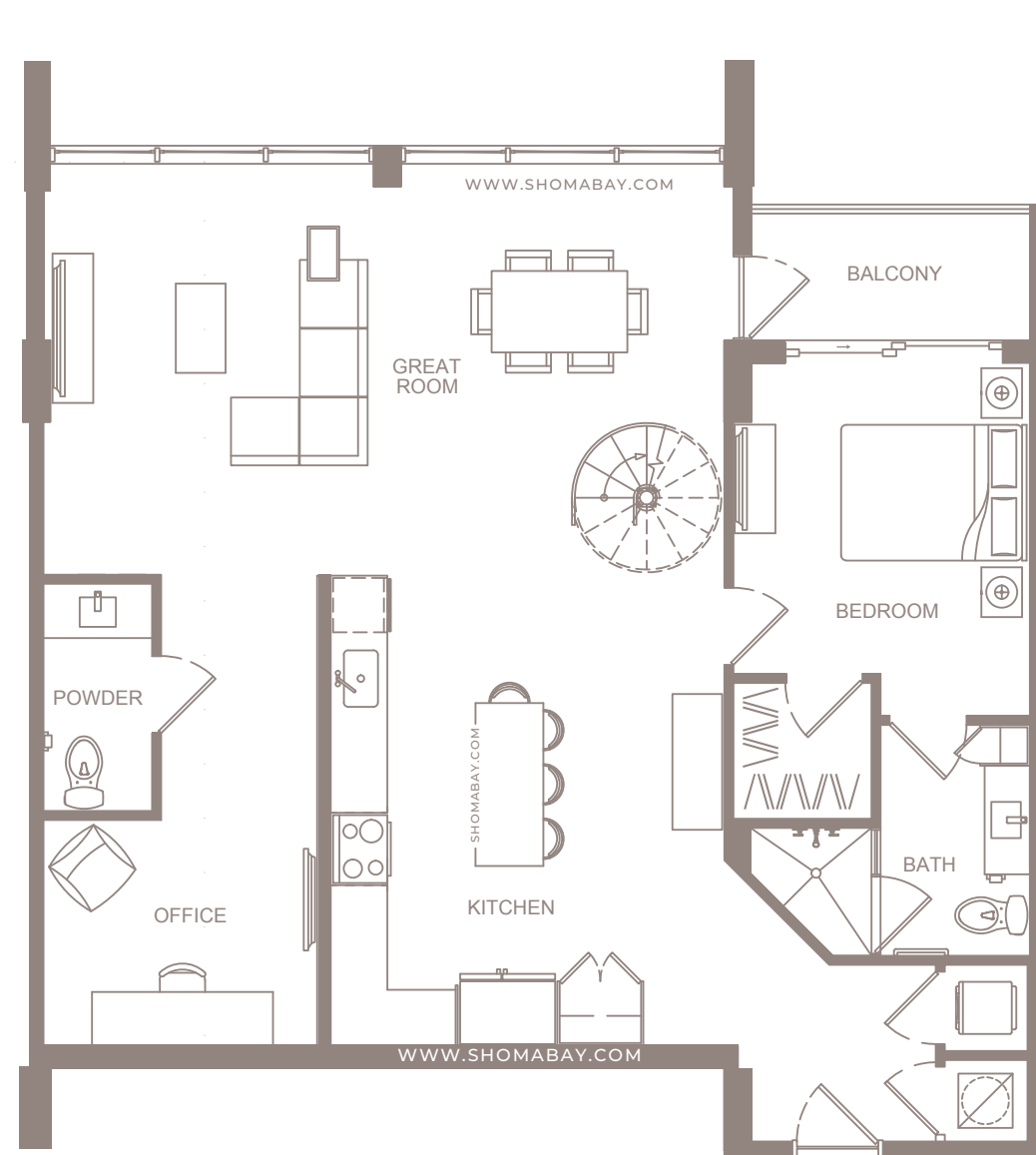


Any renderings and depictions are conceptual only and are for the convenience of reference. They should not be relied upon as representations, express or implied, of the final detail of the Units nor the views from any of the Units. ORAL REPRESENTATIONS CANNOT BE RELIED UPON AS CORRECTLY STATING REPRESENTATIONS OF THE DEVELOPER. FOR CORRECT REPRESENTATIONS, MAKE REFERENCE TO THIS BROCHURE AND TO THE DOCUMENTS REQUIRED BY 718.503, FLORIDA STATUTES, TO BE FURNISHED BY A DEVELOPER TO A BUYER OR LESSEE.

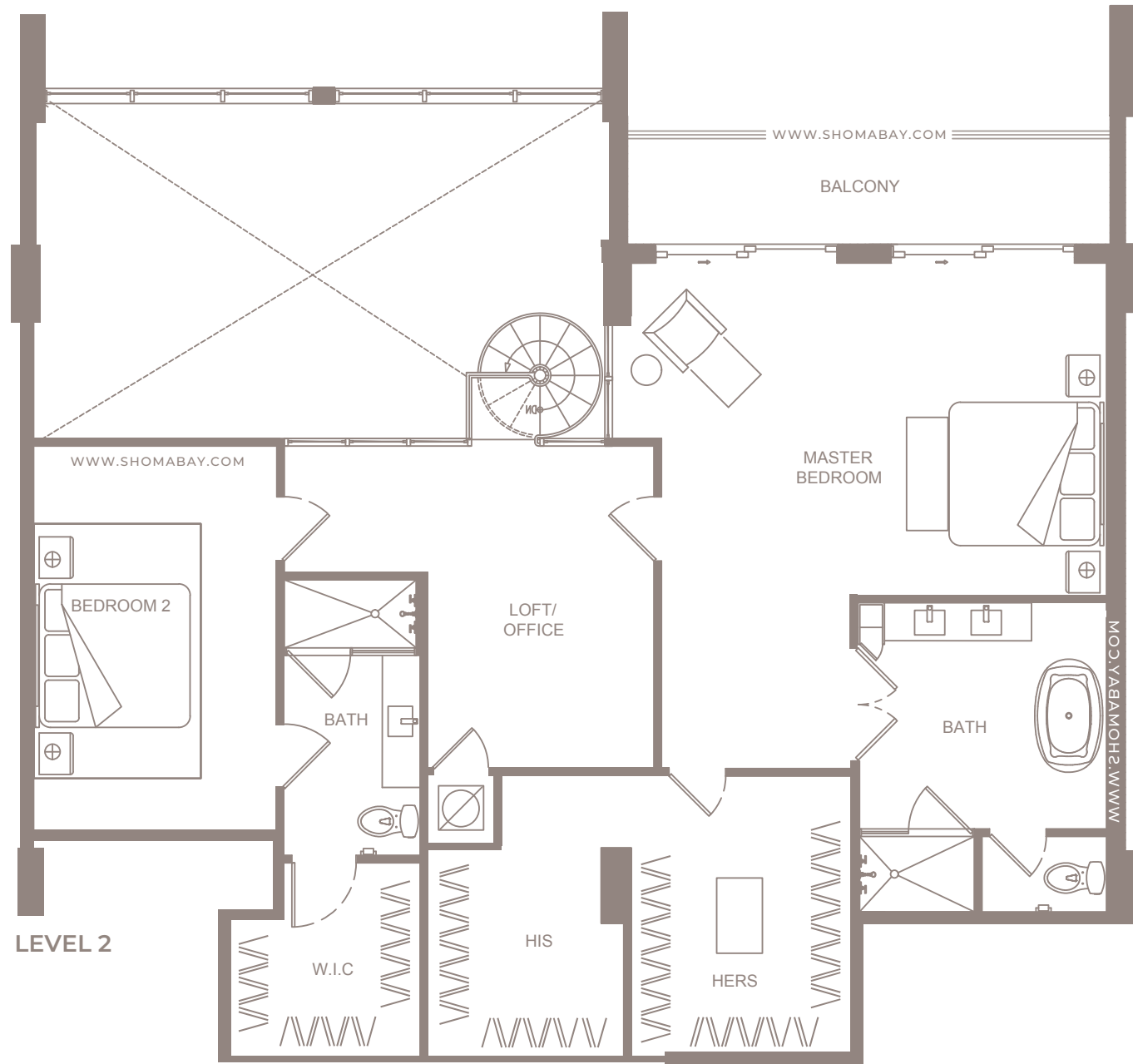


SHOMA

ISGWORLD®



LEVEL 1



LEVEL 2



LEVEL 1



LEVEL 2

UNIT P3 - PENTHOUSE (3BD / 3.5BTH / 2 OFFICES)

INTERIOR: 2,592 SQ.FT (240.8 m²)

EXTERIOR: 160 SQ.FT (14.8 m²)

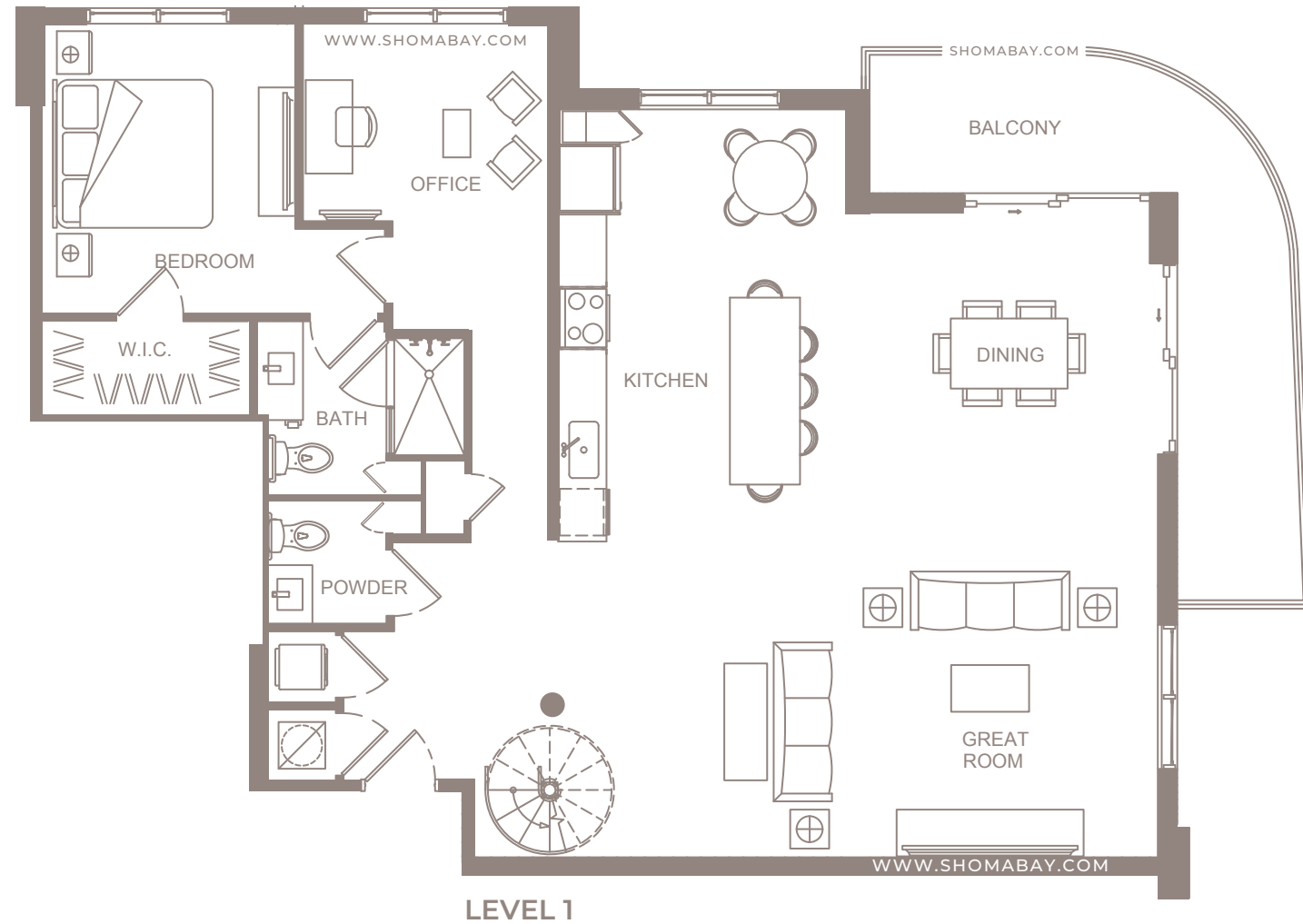


Any renderings and depictions are conceptual only and are for the convenience of reference. They should not be relied upon as representations, express or implied, of the final detail of the Units nor the views from any of the Units. ORAL REPRESENTATIONS CANNOT BE RELIED UPON AS CORRECTLY STATING REPRESENTATIONS OF THE DEVELOPER. FOR CORRECT REPRESENTATIONS, MAKE REFERENCE TO THIS BROCHURE AND TO THE DOCUMENTS REQUIRED BY 718.503, FLORIDA STATUTES, TO BE FURNISHED BY A DEVELOPER TO A BUYER OR LESSEE.

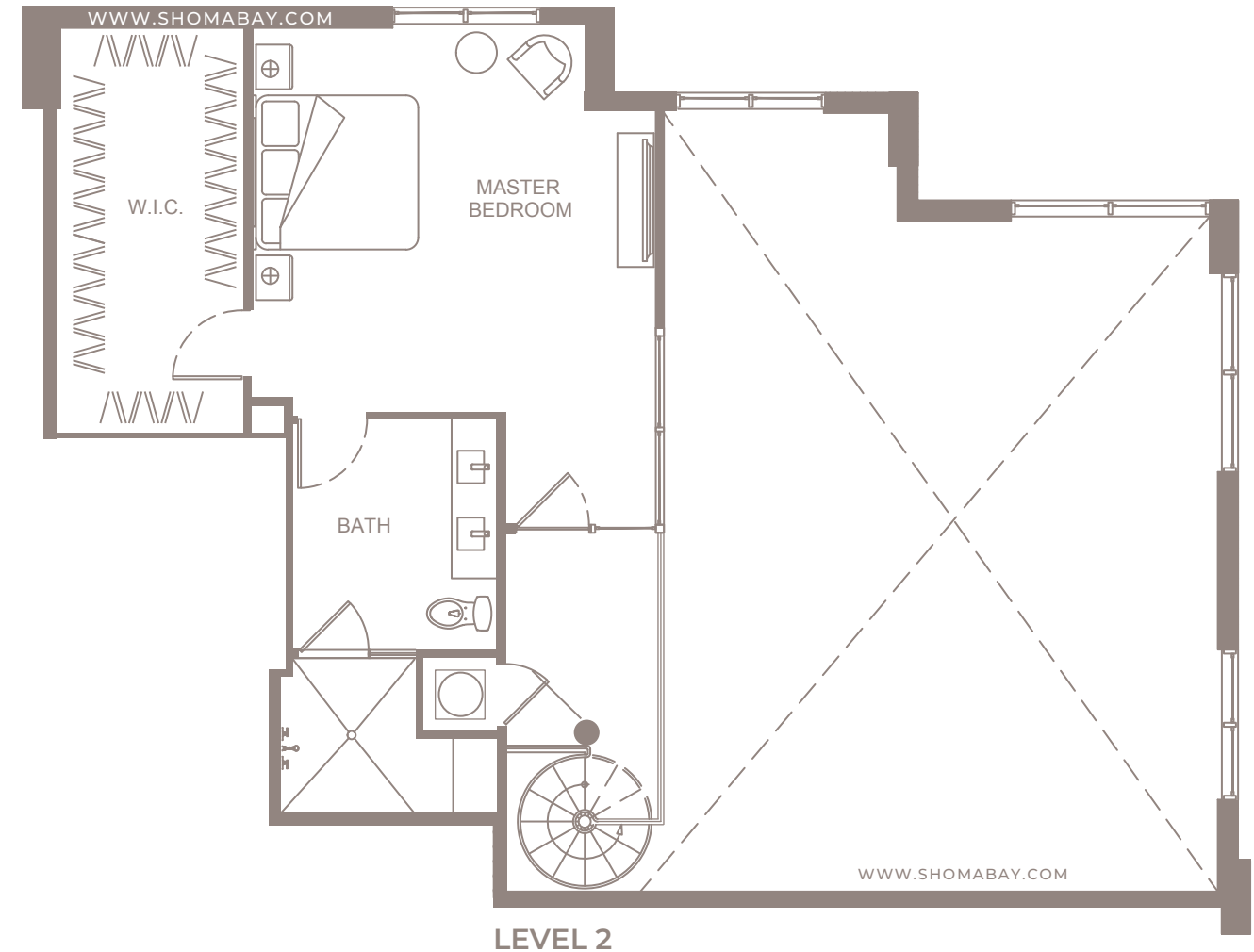


SHOMA

ISGWORLD®



LEVEL 1



LEVEL 2



LEVEL 1



LEVEL 2

UNIT P4 - PENTHOUSE (2BD / DEN / 2.5BTH)

INTERIOR: 2,151 SQ.FT (199.8 m2)

EXTERIOR: 321 SQ.FT (29.8 m2)

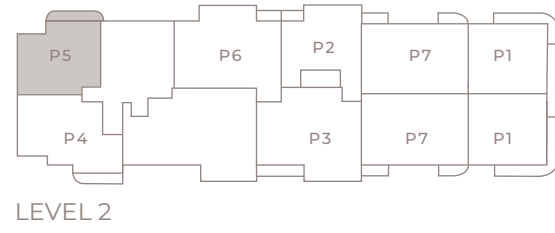
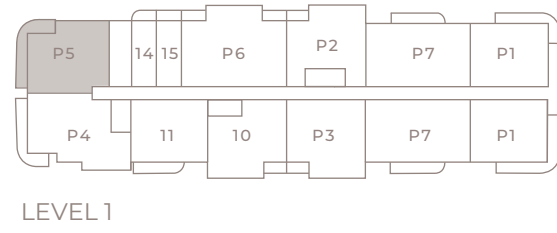
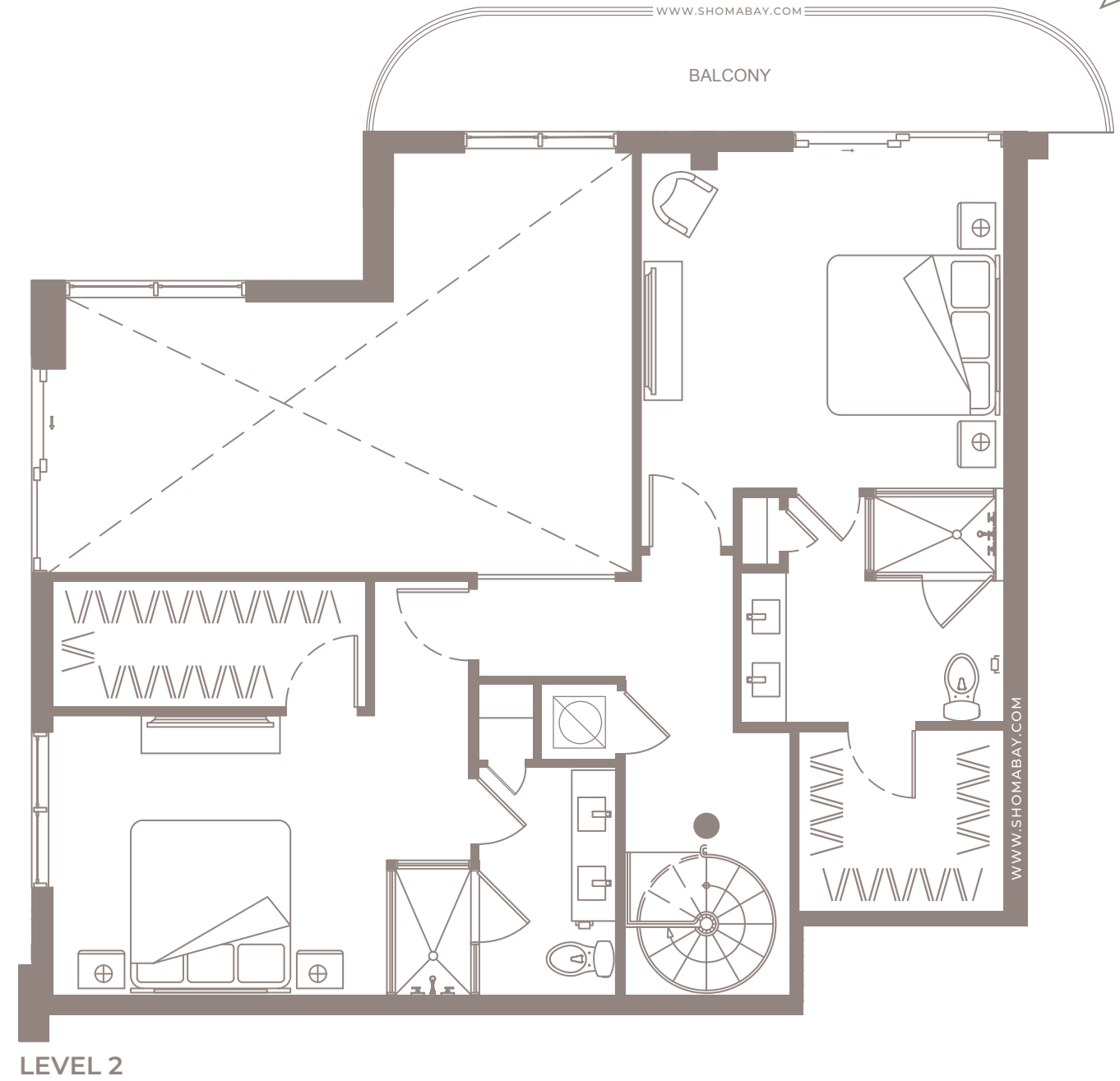
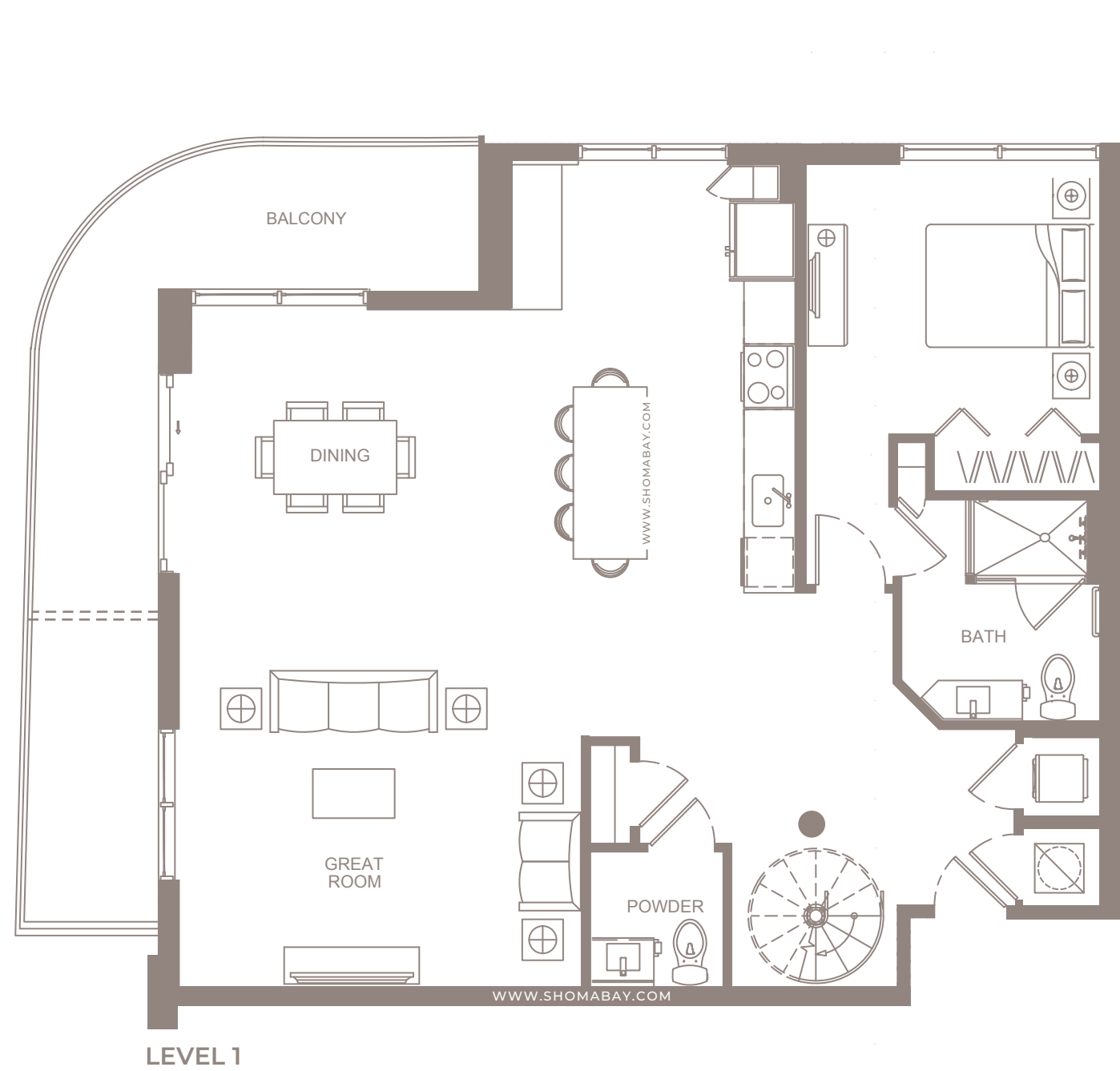


Any renderings and depictions are conceptual only and are for the convenience of reference. They should not be relied upon as representations, express or implied, of the final detail of the Units nor the views from any of the Units. ORAL REPRESENTATIONS CANNOT BE RELIED UPON AS CORRECTLY STATING REPRESENTATIONS OF THE DEVELOPER. FOR CORRECT REPRESENTATIONS, MAKE REFERENCE TO THIS BROCHURE AND TO THE DOCUMENTS REQUIRED BY 718.503, FLORIDA STATUTES, TO BE FURNISHED BY A DEVELOPER TO A BUYER OR LESSEE.



SHOMA

ISGWORLD®



UNIT P5 - PENTHOUSE (3BD / 3.5BTH)

INTERIOR: 2,144 SQ.FT (199.2 m²)

EXTERIOR: 374 SQ.FT (34.7 m²)

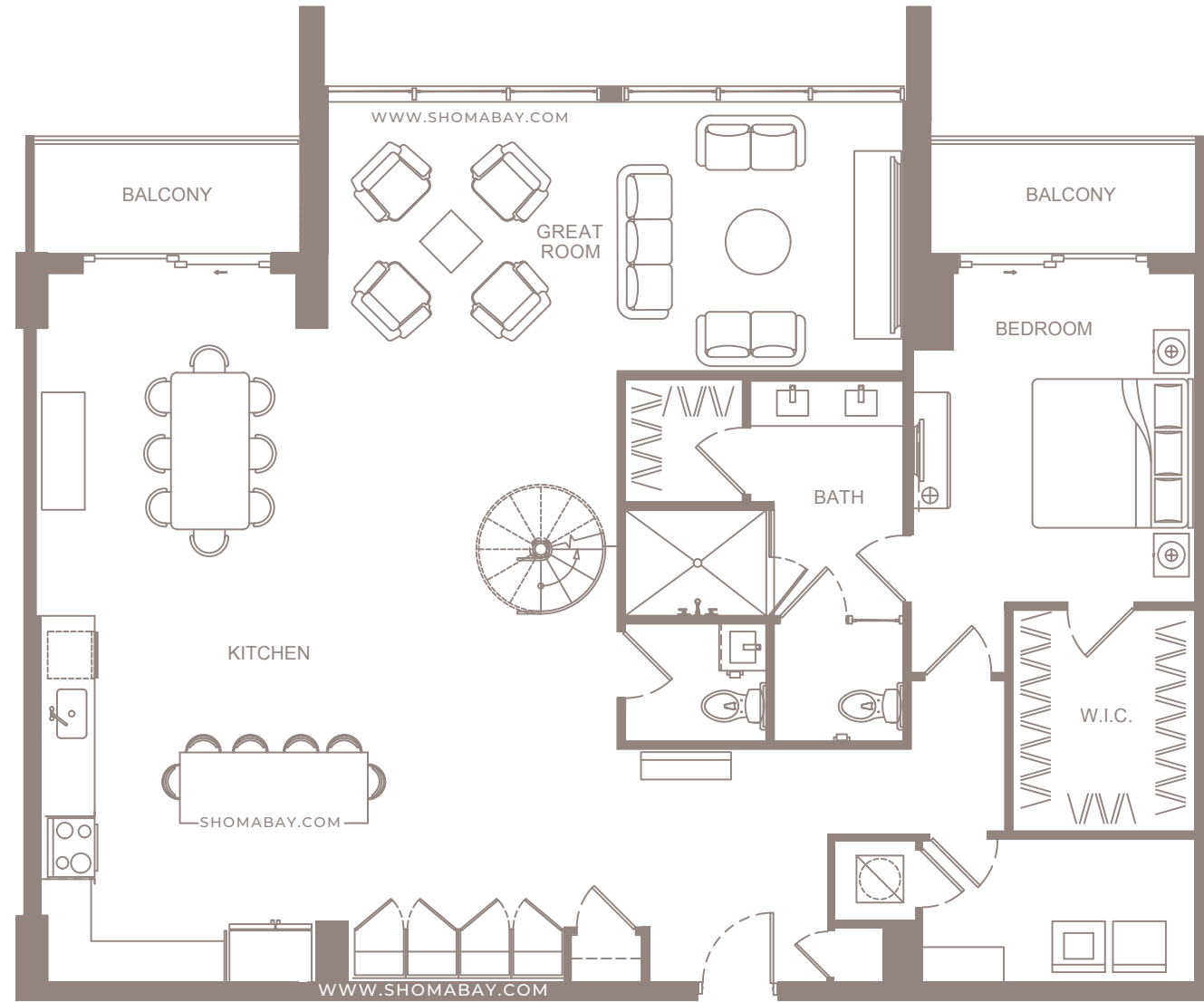


Any renderings and depictions are conceptual only and are for the convenience of reference. They should not be relied upon as representations, express or implied, of the final detail of the Units nor the views from any of the Units. ORAL REPRESENTATIONS CANNOT BE RELIED UPON AS CORRECTLY STATING REPRESENTATIONS OF THE DEVELOPER. FOR CORRECT REPRESENTATIONS, MAKE REFERENCE TO THIS BROCHURE AND TO THE DOCUMENTS REQUIRED BY 718.503, FLORIDA STATUTES, TO BE FURNISHED BY A DEVELOPER TO A BUYER OR LESSEE.

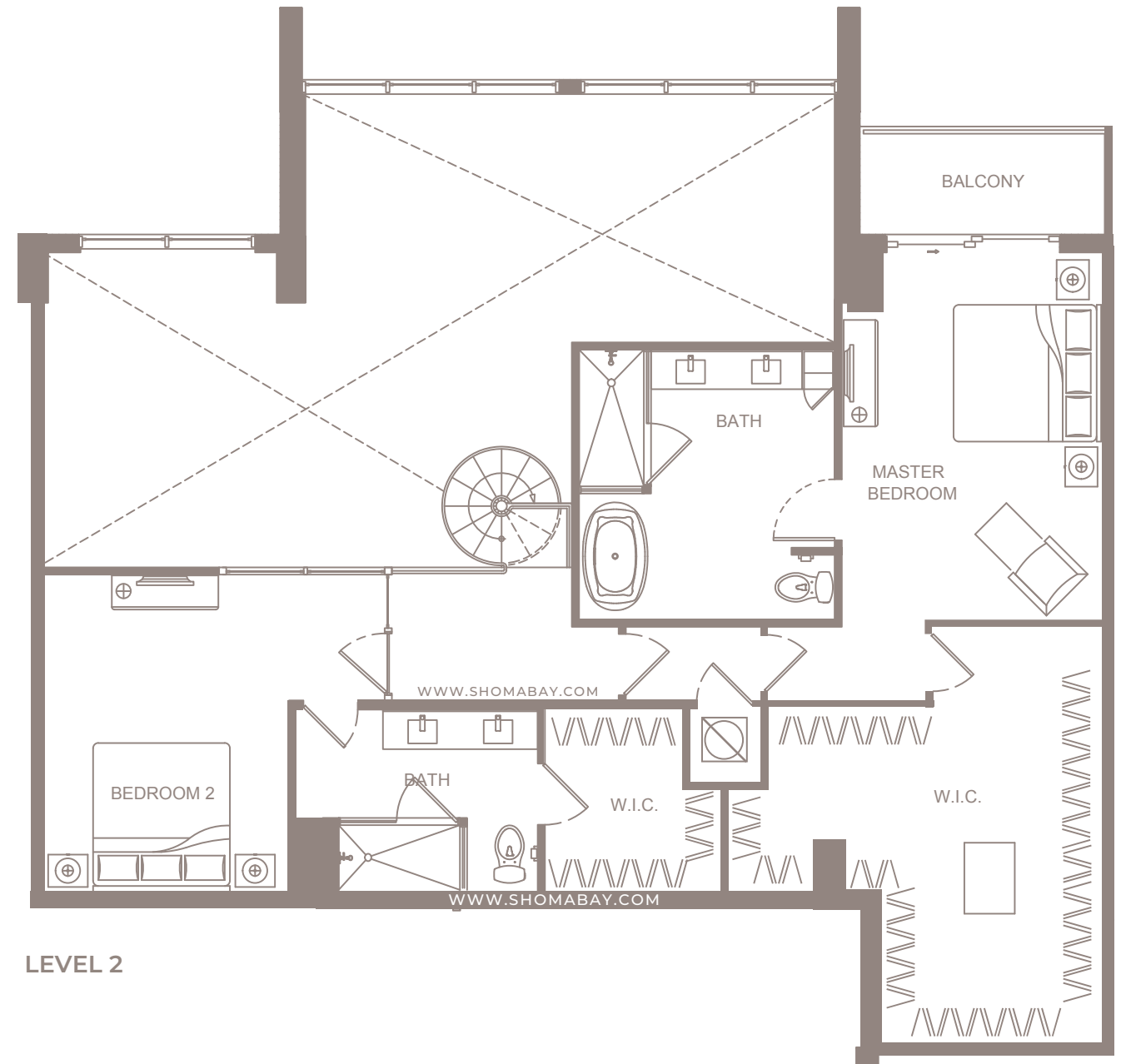


SHOMA

ISGWORLD®



LEVEL 1



LEVEL 2



LEVEL 1



LEVEL 2

UNIT P6 - PENTHOUSE (3BD / 3.5BTH)

INTERIOR: 2,964 SQ.FT (275.4 m²)

EXTERIOR: 172 SQ.FT (15.9 m²)

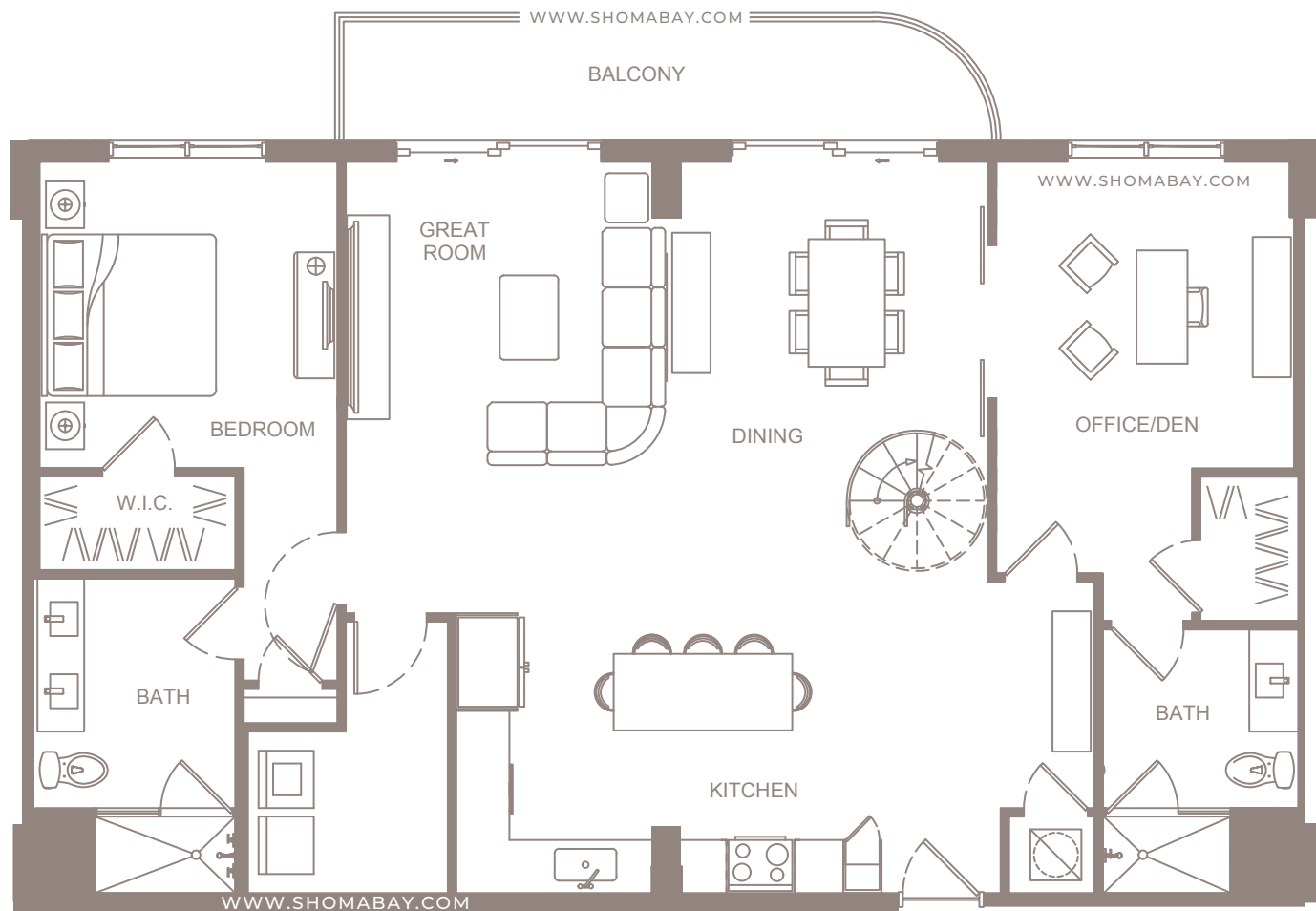


Any renderings and depictions are conceptual only and are for the convenience of reference. They should not be relied upon as representations, express or implied, of the final detail of the Units nor the views from any of the Units. ORAL REPRESENTATIONS CANNOT BE RELIED UPON AS CORRECTLY STATING REPRESENTATIONS OF THE DEVELOPER. FOR CORRECT REPRESENTATIONS, MAKE REFERENCE TO THIS BROCHURE AND TO THE DOCUMENTS REQUIRED BY 718.503, FLORIDA STATUTES, TO BE FURNISHED BY A DEVELOPER TO A BUYER OR LESSEE.

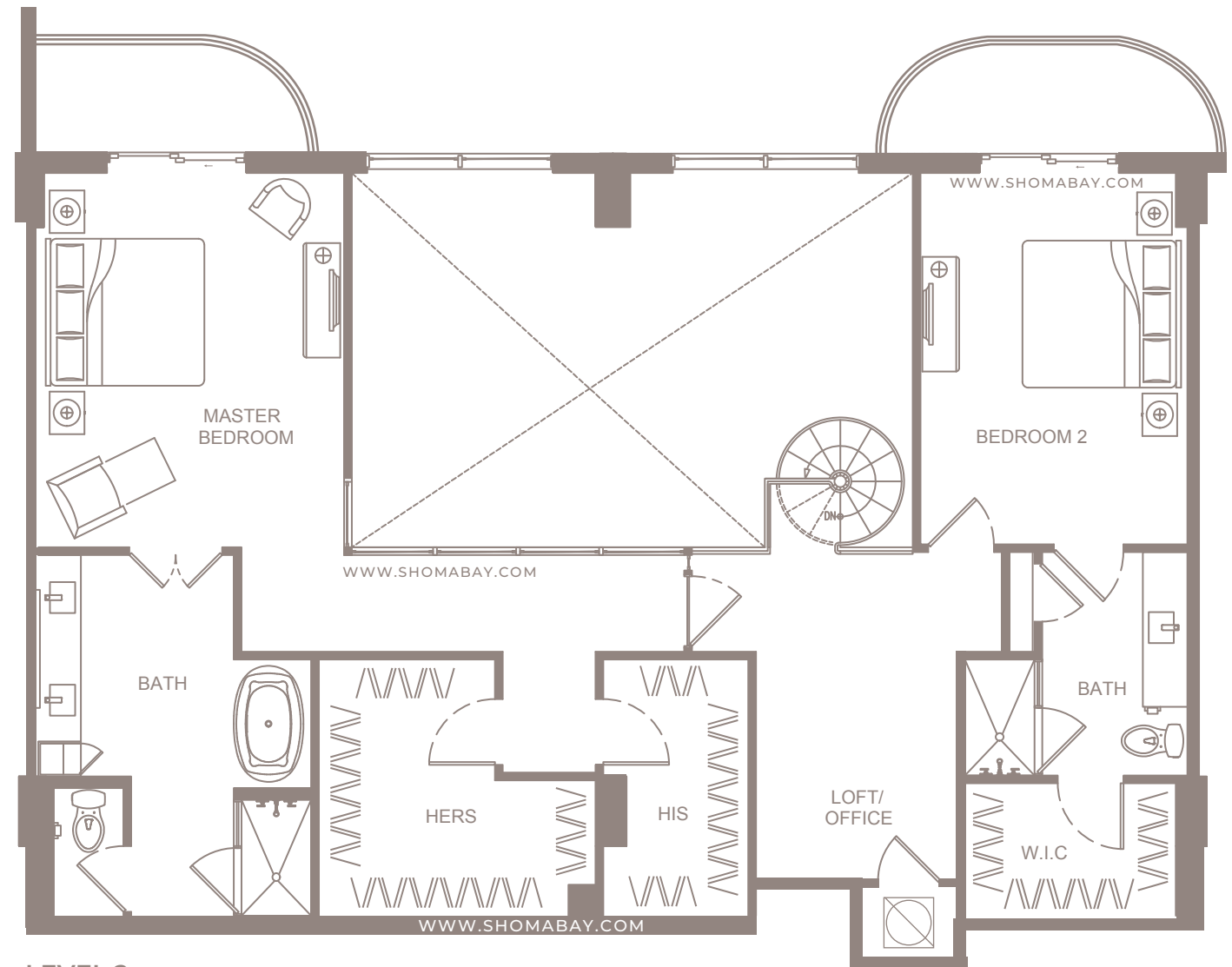


SHOMA

ISGWORLD®



LEVEL 1



LEVEL 2



LEVEL 1



LEVEL 2

UNIT P7 - PENTHOUSE (3BD / DEN / OFFICE / 4BTH)

INTERIOR: 2,760 SQ.FT (256.4 m²)

EXTERIOR: 302 SQ.FT (28 m²)



Any renderings and depictions are conceptual only and are for the convenience of reference. They should not be relied upon as representations, express or implied, of the final detail of the Units nor the views from any of the Units. ORAL REPRESENTATIONS CANNOT BE RELIED UPON AS CORRECTLY STATING REPRESENTATIONS OF THE DEVELOPER. FOR CORRECT REPRESENTATIONS, MAKE REFERENCE TO THIS BROCHURE AND TO THE DOCUMENTS REQUIRED BY 718.503, FLORIDA STATUTES, TO BE FURNISHED BY A DEVELOPER TO A BUYER OR LESSEE.



SHOMA

ISGWORLD®